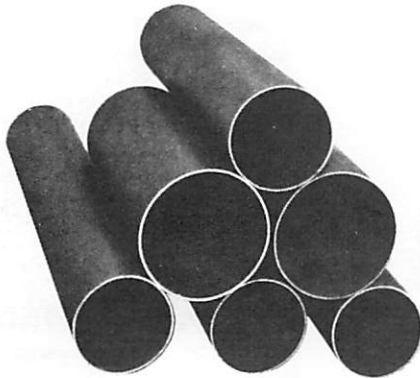


SPOUTING

ROUND SPOUTING

Our spout is smooth seam, resistance welded and meets or exceeds ASTM (The American Society of Testing and Materials) standards. The resistance welding process involves a high frequency current being introduced to the sheet edges to form a continuous weld using the metal from the sheet itself. The weld is scarfed to remove any excessive material. This produces a high quality weld that is flush with the O.D. of the spout.



SQUARE SPOUTING

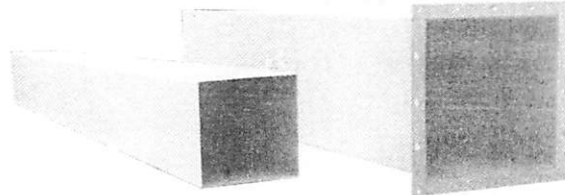
RECTANGLE SPOUTING

Standard 10 ft lengths.

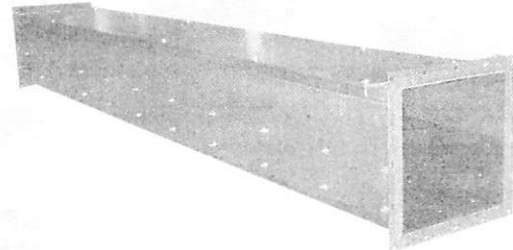
Flanged, removable lid or welded seam

AR Steel, Urethane or UHMW lined

Lining includes 3/4 sides and full bottom



WELDED SEAM SQUARE SPOUT



REMOVABLE LID SQUARE SPOUTING

Round Spouting - Approx. Capacity

Diameter	Sq Inches	Rectangle Equivalent	Bushels Per Hour
6	28.3	7 x 4	1,500
8	50.3	8 x 6	3,500
10	78.5	10 x 8	5,500
12	113.1	12 x 10	8,000
14	154.0	16 x 10	10,500
16	201.1	17 x 12	14,000
18	254.5	20 x 12	18,000

Square Spouting - Approx Capacity

L x W	Sq Inches	BPH
6	36.0	2,200
8	64.0	4,400
10	100.0	7,000
12	144.0	10,000
14	196.0	13,500
16	256.0	17,500
18	324.0	22,500

Round Spouting Weights - Lbs Per Foot

For approximate square spout weights, add 30% to round

O.D. Size	14 Ga. 0.0747	12 Ga. 0.1046	10 Ga. 0.1345	7 Ga. 0.1793	1/4" Wall 0.2500
4	3.2	4.5	5.7		
5	4.0	5.6	7.2		
6	4.8	6.8	8.6	11.6	15.3
6-5/8	5.4	7.9	9.6	12.9	
7		7.9	10.1		
8	6.5	9.0	11.6	15.6	20.7
8-5/8		9.8	12.5	16.9	22.4
10	8.1	11.3	14.5	19.7	26.0
10-3/4			15.6	21.2	
12		13.6	17.5	23.7	31.4
12-3/4			18.6	25.2	
14		15.9	20.4	27.7	36.7
16		18.2	23.4	31.7	42.1
18					48.0
20					53.
24					64.0

Spouting

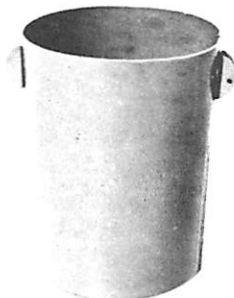
FLEXIBLE CAR LOADING SPOUT

KC Supply's spouts are manufactured in any length or gauge of steel. The Flexible Loading Spout offers a flexible and economical means of filling far ends of cars, trucks, and barges. The telescopic design permits ease of handling and controlled flow of material.

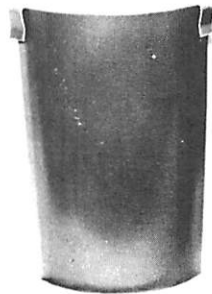
ORDERING: Specify the outside size of the down spout to which the loading spout is to be fitted, the overall length of the flex spout desired and the bottom diameter of the spout section.



BOTTOM



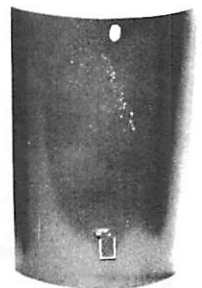
INTERMEDIATE



CLIP-IN



**GENUINE
KEWANEE**



KEWANEE

Replacement Parts - Specify diameter of both the large and small end.

Spout Liners can be inserted quickly, without removing spout section. Specify type of liner and size of spout sections.

Wire Rope and Accessories

CABLE & GUY WIRE, GALVANIZED

7/19 CONSTRUCTION



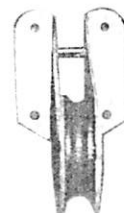
CABLE CLIPS



CABLE HANDLES



HOT HOUSE PULLEYS

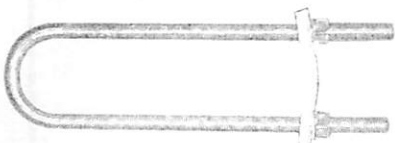


SIDE PULLEYS



CABLE TIGHTENERS

These anti-twist take-ups are 5/8" diameter zinc plated steel with heavy duty load bar. Threaded for 12" take-up.



1.800 KC SUPPLY (527.8775)
www.kcsupply.com

Phone 816.753.7676

Fax 816.753.0444
email: kcsupply@kcsupply.com