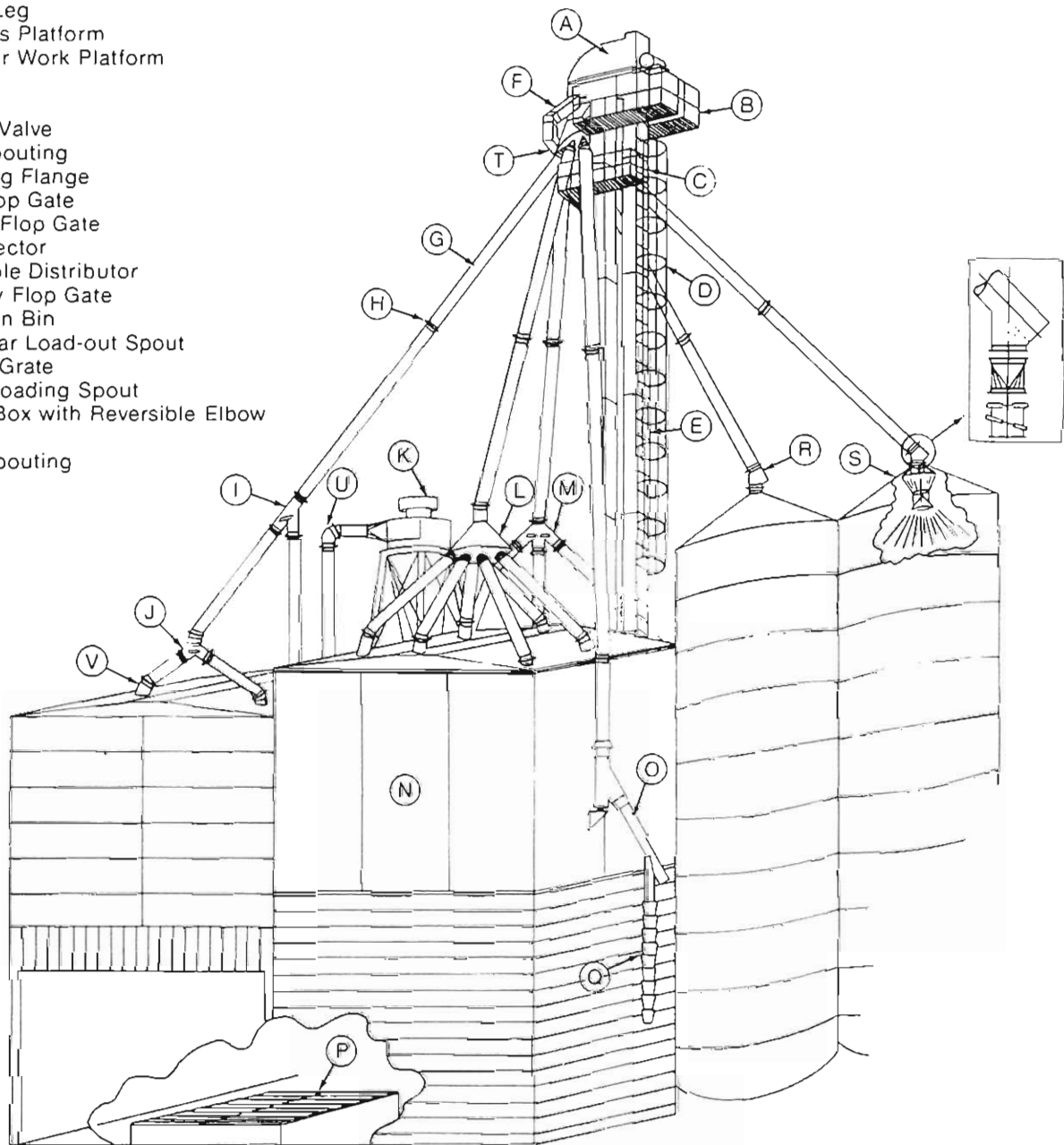
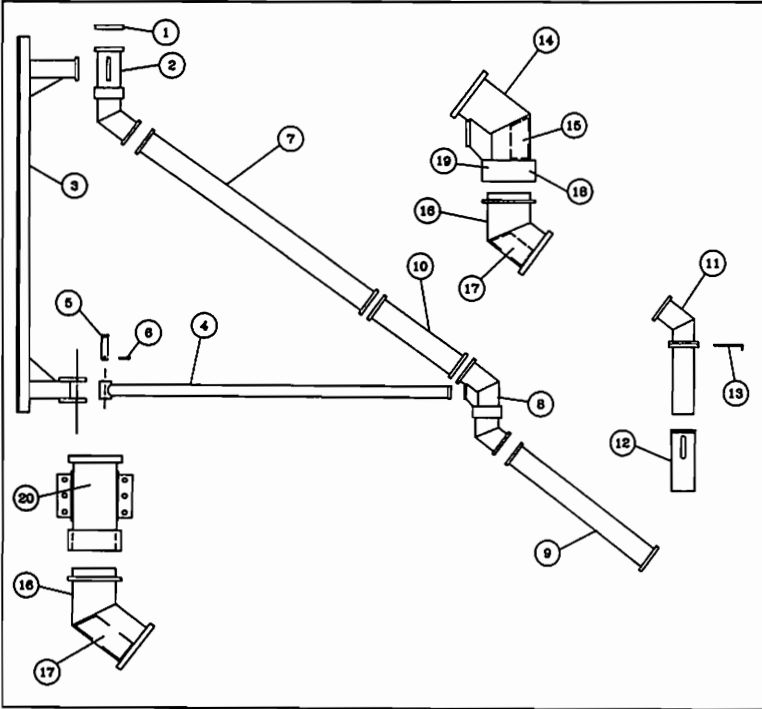


BUCKET ELEVATORS & ACCESSORIES

- A. Elevator Leg
- B. Mechanics Platform
- C. Distributor Work Platform
- D. Cage
- E. Ladder
- F. Overflow Valve
- G. Round Spouting
- H. Angle Ring Flange
- I. Off-set Flop Gate
- J. Two-Way Flop Gate
- K. Dust Collector
- L. 360° 6 Hole Distributor
- M. Three-way Flop Gate
- N. Steel Grain Bin
- O. Hopper Car Load-out Spout
- P. Driveway Grate
- Q. Flexible Loading Spout
- R. Cushion Box with Reversible Elbow
- S. Aerator
- T. Square Spouting
- U. 90° Elbow
- V. 45° Elbow



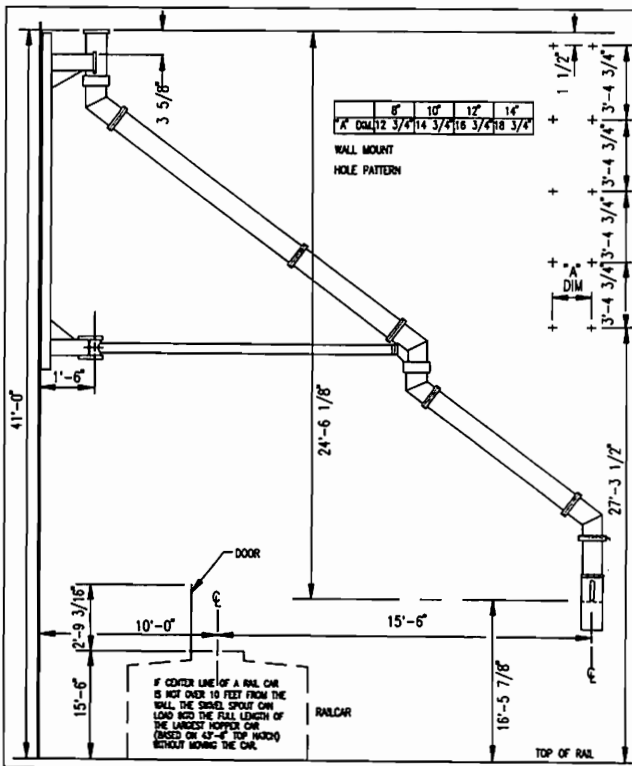
Double Swivel Loadout Spout



Sample Parts List (for 10" Spout)

Item	Qty.	Description
1	1	10" Flange
2	1	Upper Swivel Assembly
3	1	Support Frame
4	1	Brace Pipe
5	1	Brace Pin
6	1	3/16 Cotter Pin
7	1	Top Spout (10' 0")
8	1	Center Swivel Assembly
9	1	Lower Spout (8' 10")
10	1	Middle Spout (6' 6 9/16")
11	1	Lower elbow with gate
12	1	Slip Spout
13	1	Gate
14	1	Top 1/2 of center swivel assembly with dust seal (less bearings)
15	1	Top Liner
16	2	Bottom half of swivel assembly
17	2	Bottom Liner
18	30	Bearing with 3/4 - 16 Nut & L.W.
19	30	Pipe Spacer
20	1	Top 1/2 of upper swivel assembly with dust seal (less bearings)
21	8	5/8 x 2 Hx bolts w/nut & L.W. (spout to frame assembly)
22	48	5/8 x 2 Hx bolts w/nut (flange bolts)
23	48	5/8 Flast Washers
24	48	5/8 Lock Washers

Installation Dimensions for 8", 10", 12", 14"



Dimensions subject to change.

Approximate weight of complete systems.

8"	Approx.	1150 #
10"	Approx.	1375#
12"	Approx.	1600#
14"	Approx.	1790#
16 & 18" - Consult KC Supply Co		

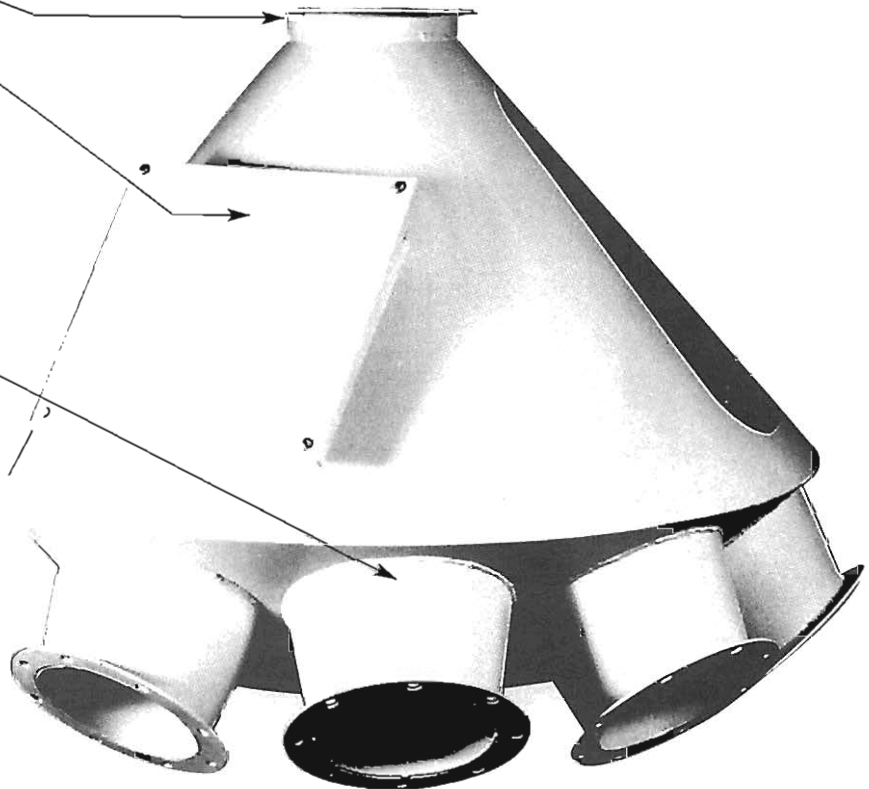
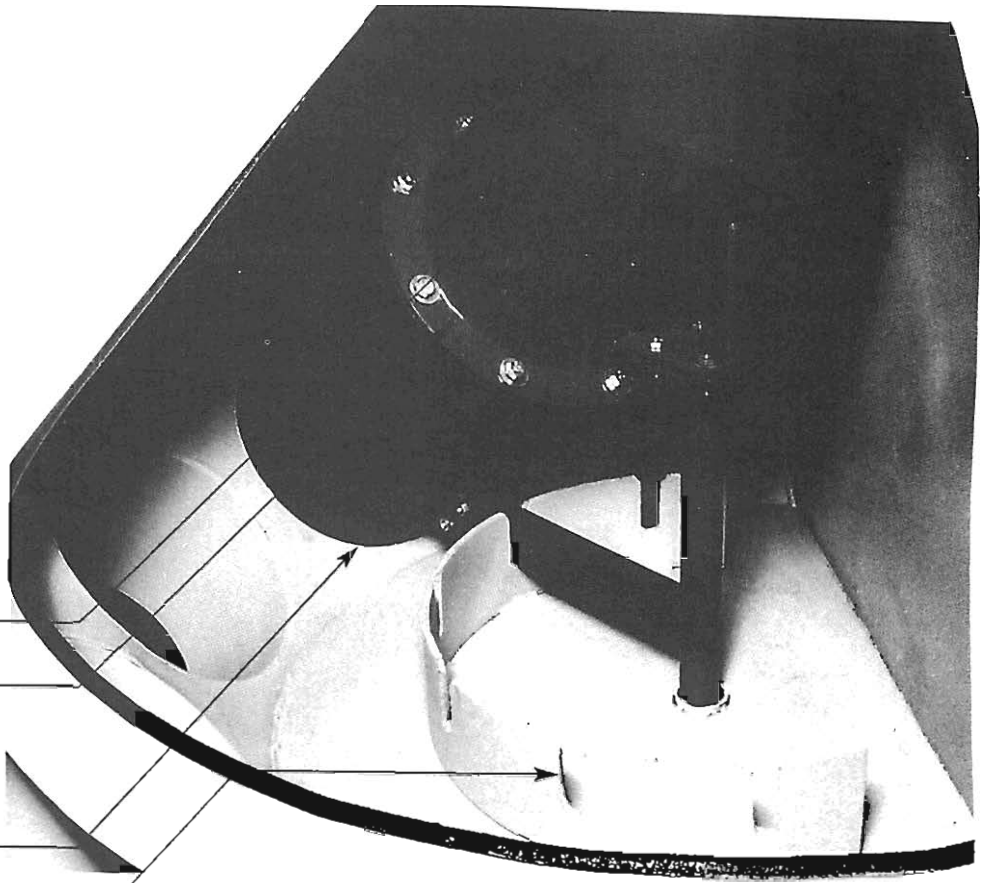
TH series Distributors

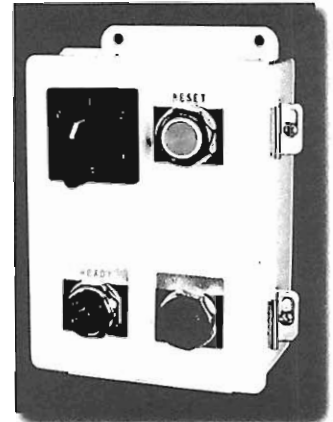
Standard Features

- 3/16" PL inner spout
- Flanged and bolted inner spout for removal through inspection door
- Inner spout enters discharge stub
- Locking ring for positive spout positioning
- Replaceable inlet stub
- Inspection door
- 10 ga. discharge stubs flanged

Available Configurations

- 6" up to 24" Round Spout
- 45° and 60° Slopes
- Flat Back
- Full Round
- AR Steel Liner
- Urethane Liner
- Hot Dip Galvanized
- Stainless Steel Construction

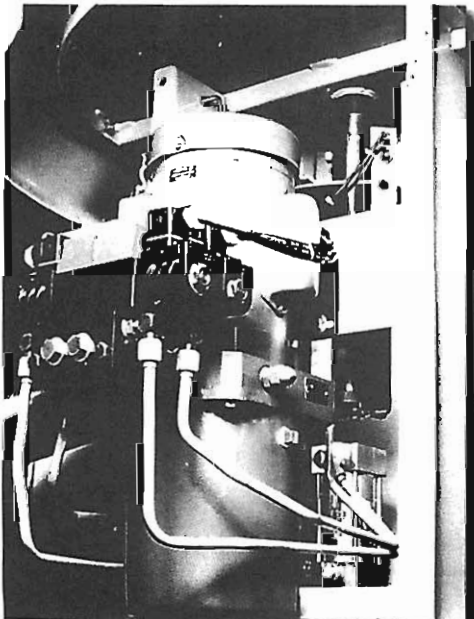




Control Panel

- The operator central station is supplied with every unit. This station is connected to the distributor power unit with standard electrical wire. Eight wires are required for distributors up to 12 holes. Distributors with 13 to 24 holes require 9 wires for operation.
- Direct coupling of the Power Select drive unit provides simple trouble free operation. This eliminates any chance of broken chains or sprockets and frozen slip clutches.
- Proximity sensors provide all position information to the micro PLC. The PLC controls the system and makes decisions based on the input received from the operator station and the sensors.
- Hydraulic cylinder and motor provide the lift and rotation motions. Both the cylinder and motor are heavy duty models rated at over 1500 psi continuous duty usage.

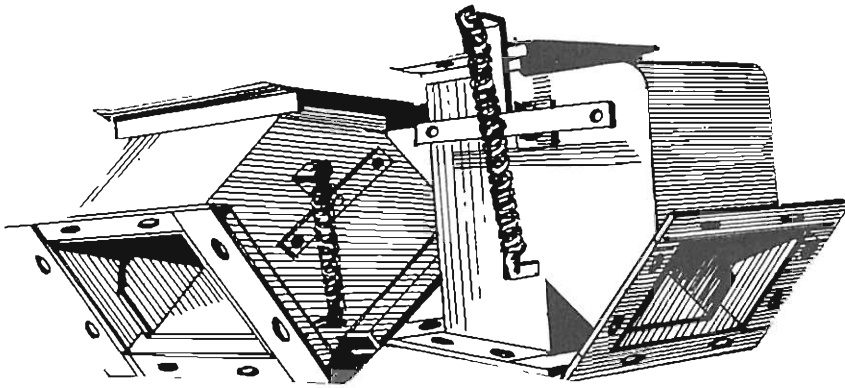
POWER SELECT™ Electric Positioning System



- Hydraulic power unit is supplied with every Power Select. The standard electrical requirements are 120V single phase. Optional units are available in 480 3 phase and Class 2 group G explosion proof.
- Solenoid valves are mounted directly to the hydraulic power unit. This reduces chances for oil leakage to a minimum.
- Hard piping is used throughout the system. It is the most durable and eliminates the chance of broken hoses in the system.



Valves - Pan and Diverter (Flop Gates)



Y- Style

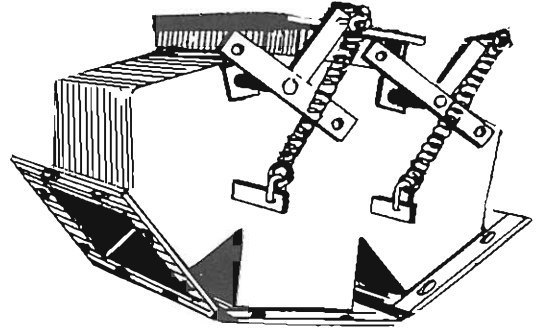
Available Options:

- Standard is Square Inlet and Square Outlet
- Carbon Steel, Galvanized, Stainless Steel
- 7 ga and 10 ga is Standard
- 45 Deg or 60 Deg Slope
- Can be lined with AR Steel, UHMW and Urethane
- Customized to your specifications

K- Style (or Offset)

Pan Valve Vs. Diverter Valve (Flop Gate)

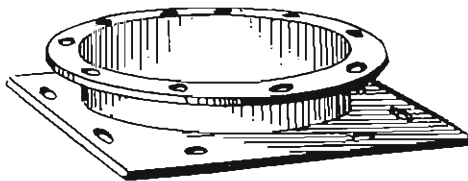
- Pan Valves are considered "leak proof"
- Pan Valves are spring loaded for positive closing
- Pan Valves pivot near the inlet while Diverter Valves pivot near the outlet



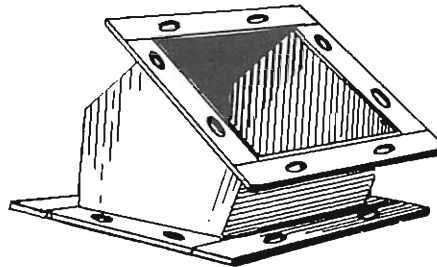
3-Way

Power Drive Options:

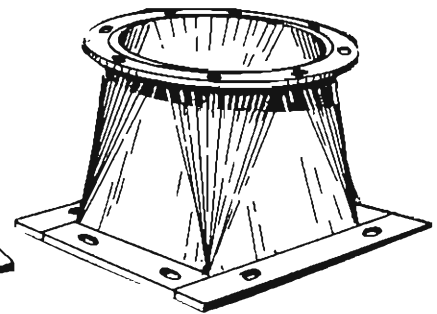
- Electric
- Air Cylinder
- Single Solenoid
- Double Solenoid
- Limit Switch (2 N.O. and 2 N.C. with Neutral Position)
- NEMA 4 (Weathertight)
- NEMA 9 (Explosion Proof)



Flat Top Adapter
(Inlet)



Square Elbow

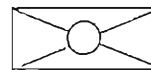


Transition
(Reducer)

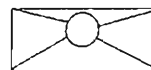
Custom Built Transition Info Needed to Order:

- ID Width
- ID Length
- Centered or Offset Outlet
- Overall Height
- Flange Size

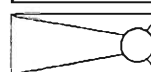
Round Centered



Long Side Straight



Short Side Straight



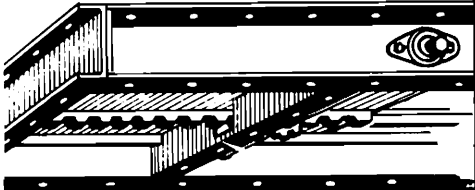
- Square to Square
- Square to Round
- Round to Round



ID Sizes for the above items : 4, 6, 8, 10, 12, 14, 16, 18, 20, 24 as well as customized sizes

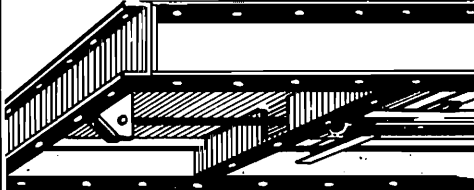
GATES

RACK and PINION:



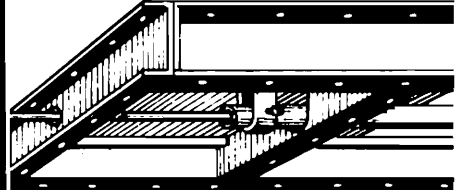
- Steel rack and pinion.
- Choice of cast iron wheels, chain, rope, hand or electric control.

AIR or HYDRAULIC:



- Internally mounted cylinder saves space, weather & dust tight.

ROD CONTROL:

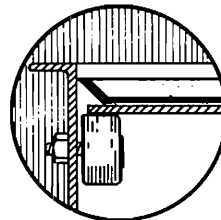


- Used for multiple discharges under large tanks.
- Several gates controlled from one station.

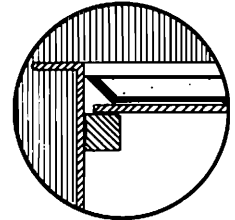
FEATURES:

- A clean rugged gate.
- All gates constructed of heavy gauge steel.
- Pinion shaft runs on ball bearings.
- Frame is punched both sides.
- Can be used with wall gate adapter.
- Stainless steel or carbon steel construction.
- Open frame - or weather tight covers.

GATE SLIDES:



ROLLER



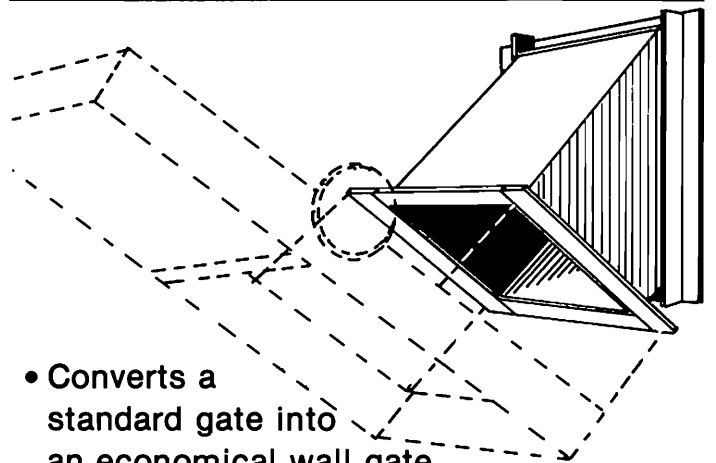
STEEL

- Beveled upper trail for good clean-out.
- Gate blade-mild or Abrasive Resistant (AR) steel

AVAILABLE OPTIONS:

- Standard Stock Sizes of 6 to 24" Square
- Custom Sizes include rectangles
- Single Solenoid Valve
- Double Solenoid Valve
- Limit Switch
 - 2 N.O. and 2 N.C.
 - with neutral position
- NEMA 4 (Weatherproof)
- NEMA 9 (Explosion Proof)

WALL GATE ADAPTER:



- Converts a standard gate into an economical wall gate.
- Factory installed lining available.



1.800 KC SUPPLY (527.8775)
www.kcsupply.com

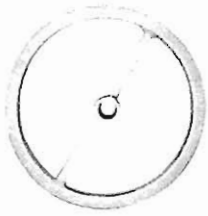
Phone 816.753.7676
email: kcsupply@kcsupply.com

Fax 816.753.0444

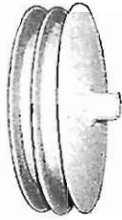
MANUAL CONTROLS

For all rack & pinion slide gates

Hand Wheel
12"



Wire Rope
Wheel



Cast Iron
Chain Wheel



CAST IRON RACK & PINION



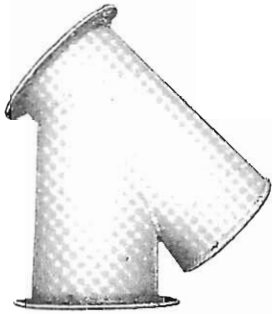
1" Bore Cast Iron Pinion
22" Cast Iron Rack

ANGLE IRON FLANGE RINGS

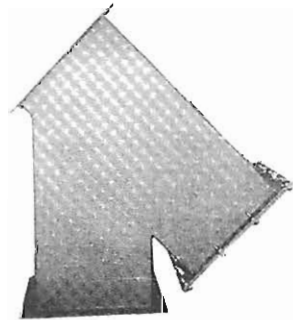
NATIONAL STANDARD PUNCH



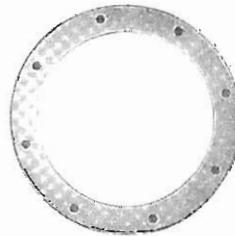
45 DEGREE DEAD STOPS



SQUARE 45 DEGREE DEAD STOPS



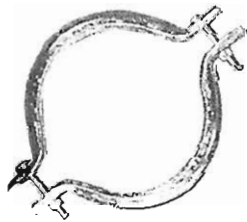
FLAT BAND FLANGES



ELBOWS

4" Elbows have 1" flanges. 6", 8", and 10" elbows have 1-1/4" flanges. 12" through 24" elbows have 1-1/2" flanges. Other flanges available. Galvanized elbows are cadmium zinc plated. All urethane lined elbows are 10 gauge construction.

TWO PIECE CLAMP BANDS



Elbow
Section



2 Piece
Elbow



3 Piece
Elbow

ROUND BRANCHES



Offset Style

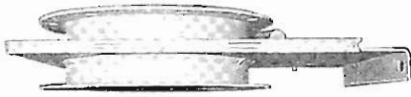


Y Style



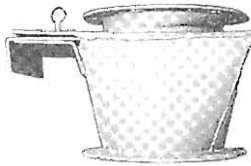
3 Way

HAND SLIDE GATES

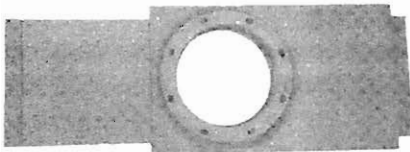


Not for shut-off usage, use feed mill style below.

FEED MILL STYLE



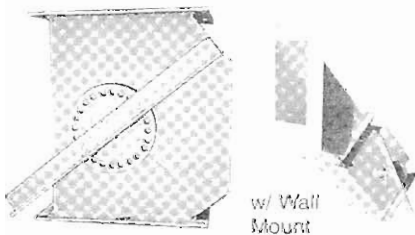
CABLE PULL GATE



CLAM GATE, OPEN



ENCLOSED CLAM GATES



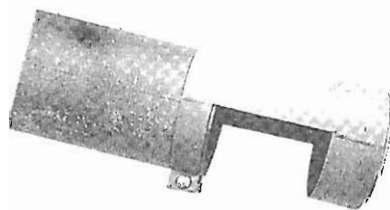
w/ Wall Mount

For wall mount gates, it is the installer's responsibility to reinforce the tank wall and install flume within bin if necessary. Follow all bin manufacturer's and/or builder's recommendations.

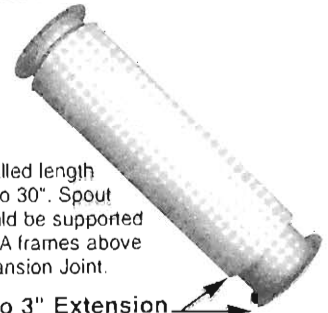
For Electric and Air Operated
OVERFLOW, 10 GAUGE



IN-BIN DEAD STOPS



EXPANSION JOINTS



Installed length 29" to 30". Spout should be supported with A frames above Expansion Joint.

2" to 3" Extension

FLOW RETARDERS



FLOW RETARDERS WITH WELDING SLEEVES



Same as above with 18" long welding sleeve extensions and 7 gauge stiffening channel on back. Use in long spout runs of more than 40 ft.

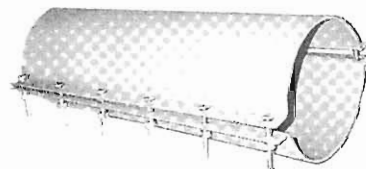
SPOUT SADDLE



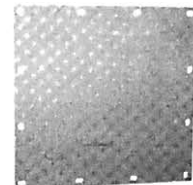
SPOUT SLEEVES WELD SPLICES



SPOUT PATCH,



SQUARE SPOUT CAP



SPOUT CAP

