

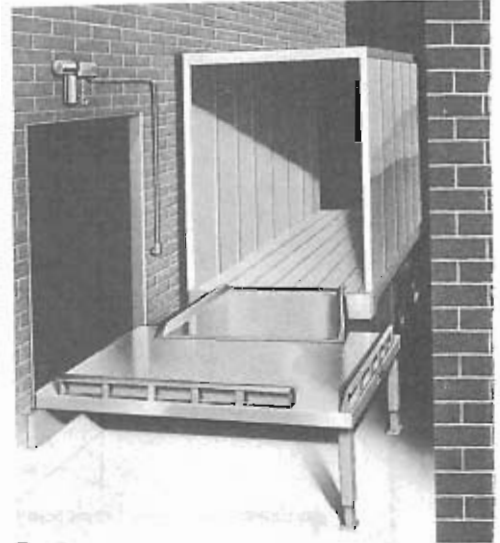


TRUCK DOCKBOARD

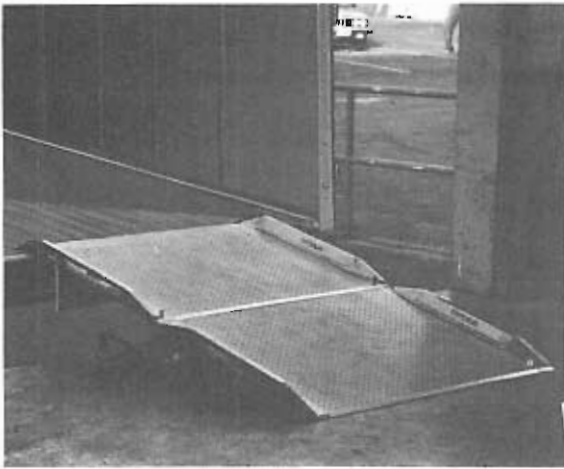
Available in either aluminum or steel, truck dockboards compensate for the difference in height between dock and truck. Angle stops lock board firmly in place while safety tread decking prevents slippage. Custom made and available in straight or flared.

DOCK EXTENSION

Allows for truck dock facilities in limited spaces such as narrow streets and alleys. Can be hinged to building, roller mounted on floor, or completely portable. Custom designed for your space and capacity requirements.



COMBINATION RAMP-DOCKBOARD



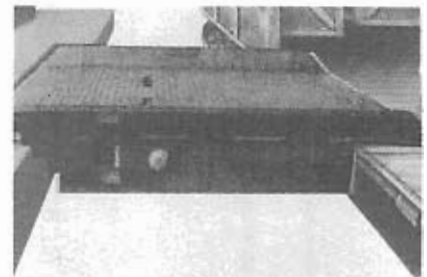
Applicable where large height differences exist. Built in two sections, units securely lock together and optional adjustable dock locks firmly hold board in place. Safety tread plate decking assures non-slip traction. Available straight or flared with steel or aluminum construction. When not in use together, the dockboard can be used independently.

WHEEL RAISERS

Wheel raisers safely and conveniently elevate trucks and trailers to dock height. Tough aluminum all welded construction supports up to 24,000 pounds or more with special underbracing to assure complete rigidity.



RAIL DOCKBOARD



DOCK-PLATE

Constructed of tough, weather resistant aluminum, with load capacities of up to 12,000 pounds. Locking legs hold plate safely in position. Angled crown compensates for height difference between dock and truck.



WALKBOARD



Designed for light loads, high strength aluminum and all welded construction allows for longevity. Shark tooth decking assures non-slip deck surface. Custom made with length available to sixteen feet and capacities of 1500 lbs. U.S. Patent #200688.

Designed to connect your dock with railcar, rugged underbrace fits your loading requirements for safe and positive positioning. Several design applications available including rectangular, flared, refrigerator car, car to car and plug door cars. Non-slip decking adds to safety. Can be ordered straight or flared with steel or aluminum construction.

Other configurations available for solving your warehouse problems.



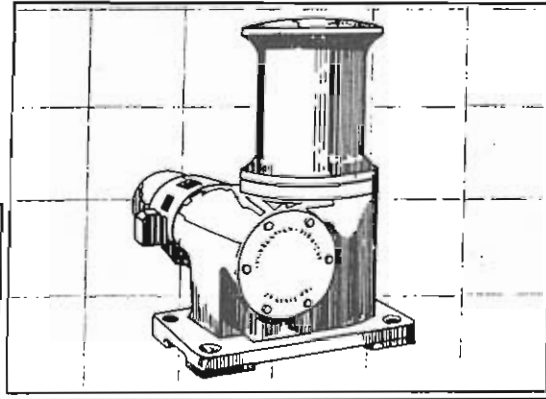
1.800 KC SUPPLY (527.8775)
www.kcsupply.com

Phone 816.753.7676
email: kcsupply@kcsupply.com

Fax 816.753.0444

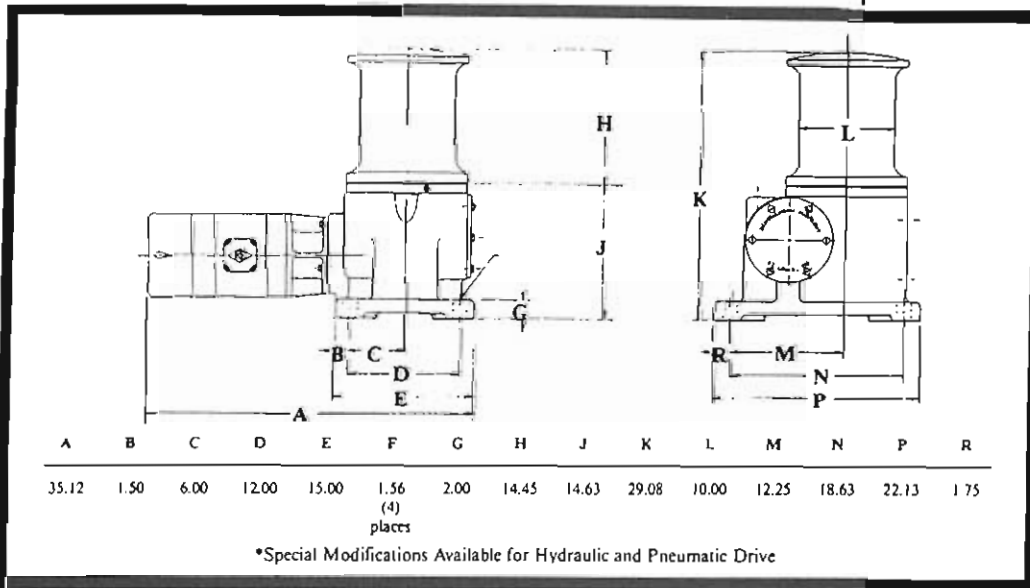
113

Capstan/Carpuller



Features:

- Cast Steel Capstan Barrel
- High Strength Ductile Iron Gear Box
- Positively Lubricated, Oil Immersed Gear Set with Reservoir and Sump
- Precision Helical/Worm Gear Reduction Sets
- Heat Treated/High Alloy Steel Shafting
- Double Taper Roller Bearings for Axial and Radial Load Control
- Spring Loaded Double Lip Seals
- Weatherproof Brake and Motor
- Crane and Hoist Duty (High Starting Torque) Motors, 230/460 Volt
- Magnetic Disc Brake, 230/460 Volt



Specifications

Model Number	Motor HP	Starting Pull	Running Pull	Stall (Bollard) Pull	Nominal Line Speed	Approx. Weight
SA1014-10	10	20,000 lbs	7,500 lbs	35,000 lbs	40 fpm	820 lbs
	10	16,625 lbs	6,250 lbs	35,000 lbs	48 fpm	820 lbs
SA1014-7.5	7.5	15,000 lbs	5,500 lbs	35,000 lbs	40 fpm	800 lbs
	7.5	20,000 lbs	7,500 lbs	35,000 lbs	28 fpm	800 lbs
SA1014-5	5	10,000 lbs	3,800 lbs	35,000 lbs	40 fpm	785 lbs
	5	15,000 lbs	5,500 lbs	35,000 lbs	28 fpm	785 lbs
	5	20,000 lbs	7,500 lbs	35,000 lbs	20 fpm	785 lbs

Caution:

For safety purposes, operator should not stand in line with rope. No less than two (2) full wraps should be maintained on the Capstan Head at all times. Hands and fingers should be kept clear of the rope as it approaches the proximity of the Capstan Head.

Safety Maintenance:

Capstan / Carpullers are furnished with self-adjusting Magnetic Disc Brakes. However, occasional maintenance is required. Due to the varying elasticity of different ropes, there exists a possibility for the line overhaul back through the Capstan Head. This could occur when stopping the Capstan / Carpuller under load should the brake slip.

Double-Braided Polyester

- Low stretch, high strength
- Does not rotate or flatten under load
- Flexible with high strength to weight ratio

Twisted Polypropylene

- Economical
- Floats
- Not ultraviolet resistant
- Will rotate under load

Twisted Polypropylene/Polyester

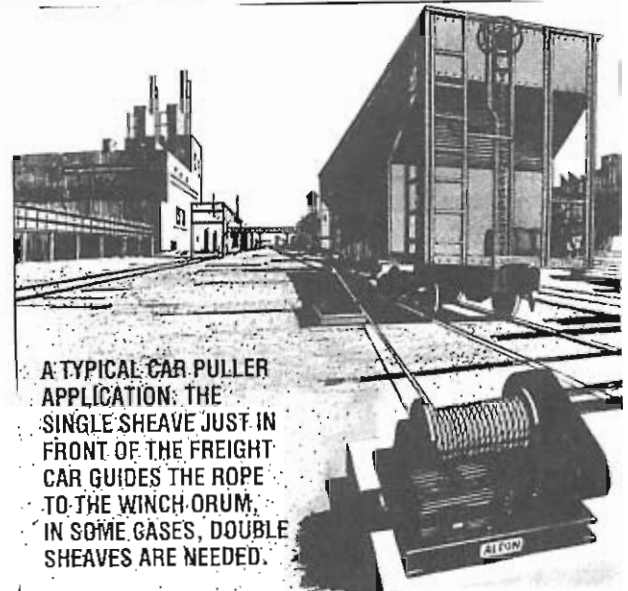
- Ultraviolet resistant

	Nylon	Polyester	Polypropylene
Wet vs Dry Strength	85-90%	100%	100%
Shock Load Absorption	Excellent	Good	Very Good
Floats	No	No	Yes
Breaks at % Elongation	18-25%	12-15%	15-25%
Extends under sustained loads	Moderate	Low	High
Absorbs Water	2-8%	<1%	None
Resistance to:			
Ultraviolet	Good	Excellent	Poor
Rot and Mildew	Excellent	Excellent	Excellent
Abrasion	Very Good	Excellent	Good
Acids	Fair	Good	Excellent
Alkalis	Very Good	Fair	Excellent
Oils and Gas	Very Good	Very Good	Very Good

Recommended Work Load (RWL) is based on minimum tensile strength. Comparison of Fiber Rope with 5:1 and 12:1 safety factors.

Size & Type	Std Tensile	RWL (5:1 / 12:1)
1 1/2 Braid Poly	76,000	13,680 - 5,700 lbs
1 1/2 Twist Poly	29,700	5,360 - 2,233 lbs
1 1/2 Twist Blend	29,800	5,360 - 2,233 lbs

CAPSTAN FIBER ROPE



A TYPICAL CAR PULLER APPLICATION: THE SINGLE SHEAVE JUST IN FRONT OF THE FREIGHT CAR GUIDES THE ROPE TO THE WINCH DRUM. IN SOME CASES, DOUBLE SHEAVES ARE NEEDED.

Aircraft Cable * Fiber Core * IWRC (Independent Wire Rope Center)

6 x 19 Class Wire Rope: 6 strands, nominally 19 main wire per strand

This class is most widely used and is found in its many variations throughout nearly all industries. With its combination of flexibility and wear resistance, rope in this class can be suited to the specific needs of diverse kinds of machinery and equipment. The designation of 6 x 19 is only nominal as the number of wires per strand ranges from 15 to 26.

6 x 37 Class Wire Rope: 6 strands, 37 wires per strand

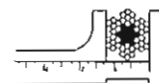
The 6 x 37 class of wire rope is characterized by the relatively large number of wires used in each strand. Ropes of this class are among the most flexible available, but their resistance to abrasion is less than the 6 x 19 class. The designation of 6 x 37 is again only nominal as in the 6 x 19 class.

19 x 7 Rotation Resistant Wire Rope

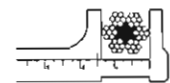
The 19 x 7 rotation resistant rope consists of an inner layer of 6 strands of 7 wires each, made left lang lay over a strand core, and an outer layer of 12 strands, each of 7 wires, made in right regular lay. It is this combination of opposing lays which enables the rope to resist the tendency to rotate when in service.

HOW TO CALIPER WIRE ROPE

Rope diameters are determined by measuring the circle that just touches the extreme outer limits of the strands - that is, the greatest dimension that can be measured with a pair of parallel-jawed calipers or machinists caliper square. A mistake could be made by measuring the smaller dimension.



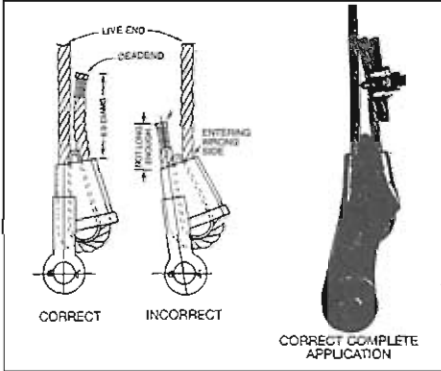
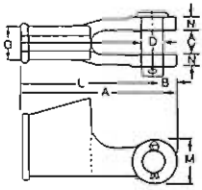
INCORRECT METHOD



CORRECT METHOD

WIRE ROPE

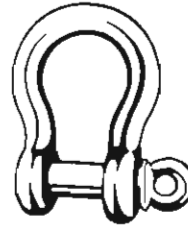




Wedge Socket



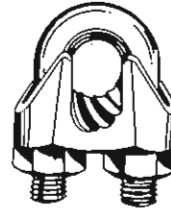
Eye Slip Hooks
Forged Steel with Large Eye



Screw Pin Anchor



Thimble



Wire Rope Clips

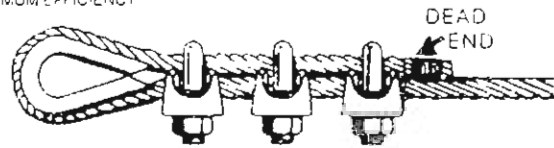


Wire Rope Cutters

- Hand Shear or
- Impact

HOW TO USE CLIPS PROPERLY FOR MAXIMUM EFFICIENCY

1. U Bolt must bear on dead end of rope
2. Never use less than minimum number of clips as listed above
3. Space clips 6 times the rope diameter
4. Using proper torque, tighten nuts properly. Be careful not to damage threads or clip base
5. Nuts should be retightened after initial load
6. Regularly inspect and retighten



Caution: Never use any wire rope clip to directly connect two straight lengths of wire rope

HOPPER CAR UNLOADING TOOLS

TURNING BAR



#4020-03

Easy to open gates only. The Turning Bar is six ft long and made of 1 3/8" dia. steel, with an angle at one end to clear the side of the car. Operator of turning bar should not jump or stand on bar. 30 lbs.

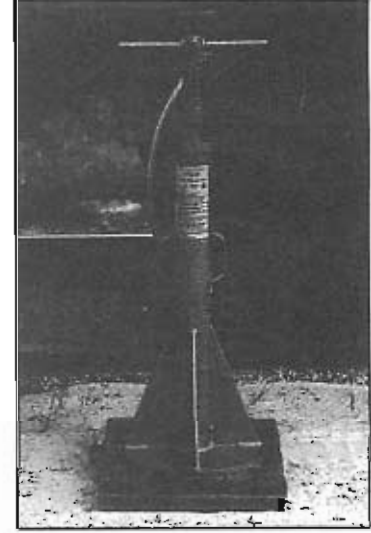
REVERSIBLE RATCHET WRENCH



#4020-04

Easy to open gates only. Ratchet action allows worker to control product flow more precisely. Wrench direction is reversed by flipping a key. A 16" long extension with a 2-step square end brings wrench out away from car side. 29 lbs.

STABILIZING JACK



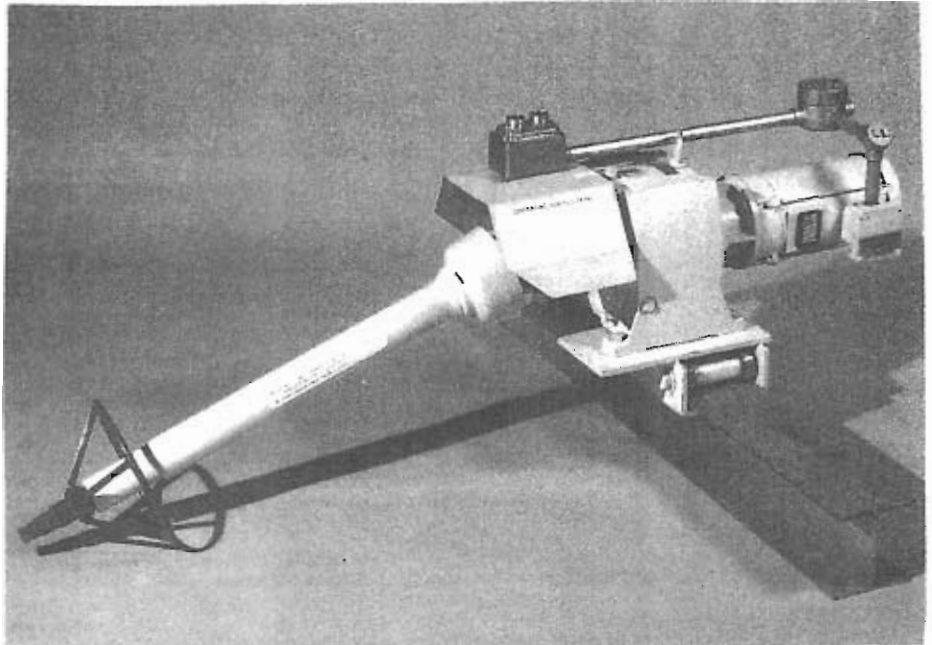
#4013-02

Help prevent side-tipping of railcar when unloading or loading. Railcar Jack stabilizes 100,000 lbs. and lifts 40,000 with 4-way screw head. Use one jack on each side of car. Minimum retracted height 18". Screw rise 9 1/2". 100 lbs. Indicate retracted height desired.

Billco Hopper Gate Openers

Open Hopper Gates
Quickly and Easily!

- 3 HP Electric or Pneumatic
- Explosion-proof (II-G) is Standard
- Easy to install and operate
- Cost-Effective
- Immediately Reversible
- Telescoping Shaft
- Protects employees from expensive injuries
- Fits standard 6" H-Beam
- Optional swivel base allows one unit to open railcars on two parallel tracks



Specifications

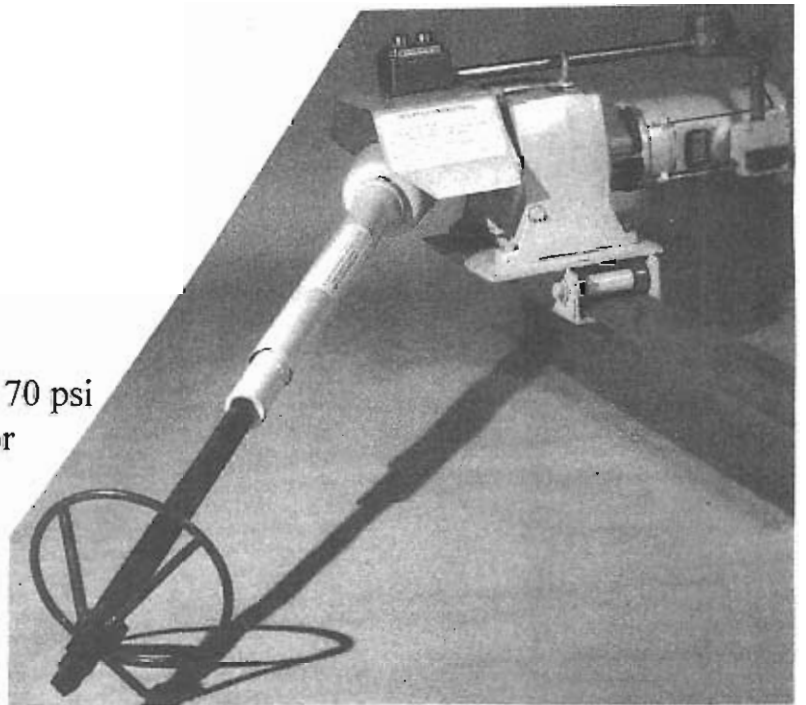
Torque: 850 ft lbs / 10,200 in lbs

Electric: 3HP Class II-G motor
TEFC Available
220 or 480 volt

Pneumatic: 3HP requires 100 CFM at 70 psi
Filter/Regulator/Lubricator
not included but required.

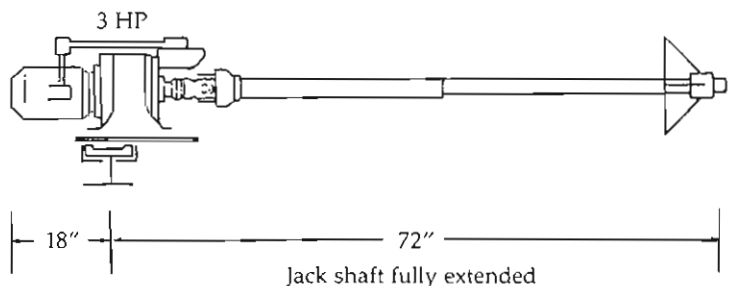
Gearbox: 100:1 Reduction

Motor: Forward - Reverse two-
button push and hold
electric switch



Motor starter not included

20 ft #14-8 wire and 2
explosion-proof (II-G)
connectors included.
(UL and CSA approved)



1.800 KC SUPPLY (527.8775)
www.kcsupply.com

Phone 816.753.7676

Fax 816.753.0444

email: kcsupply@kcsupply.com

117

Door Devil Hydraulic Hopper Gate Opener

The Door Devil was designed to meet the AAR S-233-92 standards for the new larger car doors. This hydraulic opener does not work on the jackhammer principle nor the 100-1 gear reduction principle. The Door Devil has a smooth positive-turning motion of hydraulic power and builds torque to match the load instantly.

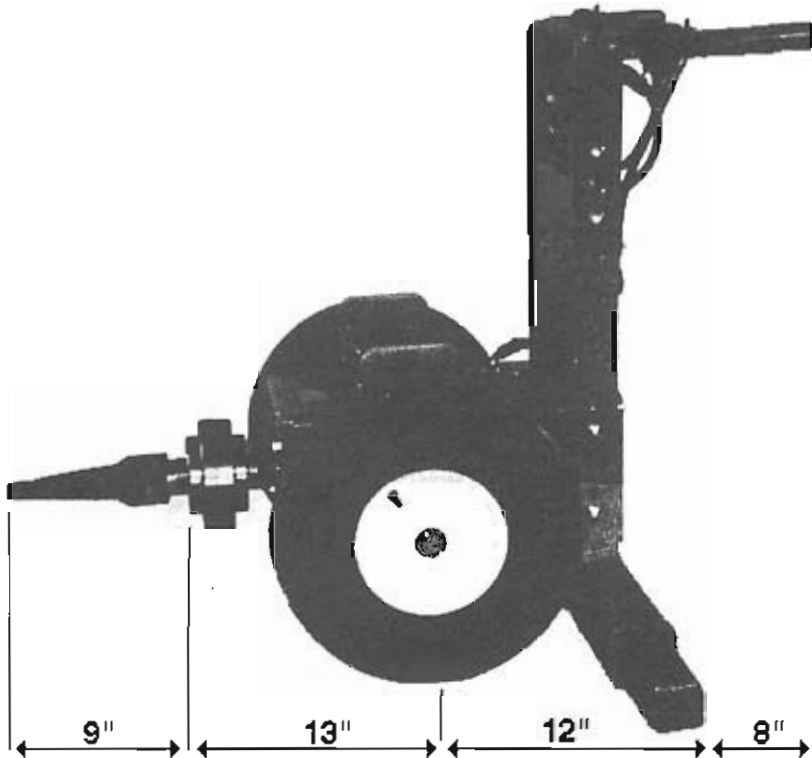
Hydraulic pressure is never applied to the tires since a specially-designed foot bar accepts the load and prevents the Door Devil from "squatting" or becoming unstable. This design ensures solid coupling to the car and makes it easy to operate and open railcars.

SAFETY FEATURES

- Operates when button is depressed
- Stops when button is released
- Foot bar keeps pressure off tires
- Balanced - easy to move
- Does not require "cheater" bar
- Explosion Proof
- Quite - no hammer noise

SPECIFICATIONS

- Char-Lynn 10,000 series motor for high-torque, low-speed operation.
- 1/2" pressure line with a 3/4" return line
- Universal 7" taper bit
- Drive shaft available in different lengths. 10" and 20" length are most popular.
- Height of Door Devil is factory set at end users requirements
- Needs a hydraulic pump at facility
- Can be operated from hydraulic systems of tractors and gasoline



- Reduces time to open car doors
- Bits last 3 - 4 times longer than bits on hammering-type openers
- Low maintenance
- Two grease zerks for wheel bearings
- Left thumb button turns bit counter-clockwise (left)
- Right thumb button turns bit clockwise (right)
- No problems with noise
- No electricity needed

WORKMASTER™ OPENERS ARE
REMARKABLY EASY-TO-USE
AND BUILT-TO-LAST

Our openers are engineered and manufactured to provide long-term, dependable operation. But even the most solidly constructed equipment will not succeed if it's difficult to use. That's why we rigorously field tested these openers before finalizing each design. Actual field use guided everything from the final placement of operator controls to precise adjustments in weight balance. We even included the convenient tool and accessory container that operators requested. The resulting hopper car openers are remarkably easy-to-use.

Storage container keeps hand tools and accessories within easy reach.

Pneumatic powered pivot wheels smoothly rotate and pin lock in position. Heavy duty steering mechanism with easy to access grease fittings. (Pivot-wheel model only)

Oversized pneumatic tires easily traverse rough, uneven ground.

Specifications

- Pivot Wheel - Opens All car slide gates
- Fixed Wheel - Car must have fixed capstan
- Requires 148 CFM @ 85 psi (free) and 114 CFM @ 85 psi (impacting)
- Removable air trap filter
- Torque Range 1,700 - 13,000 ft lbs.
- Pneumatic cylinder pivot actuator (PW model)
- Self-closing throttle with forward/reverse and pivot controls
- Pivot wheel lock pins (2 positions)
- "No-Tip" weight balance
- Double hammer impact mechanism
- 45" H x 42" W x 33" L Frame X 44" Handle Width
- 308 lbs. - Pivot Wheel (PW) and 265 lbs. - Fixed Wheel (FW)

GO-A8 Pneumatic Hopper Gate Opener with Fixed or Pivot Wheels

Ergonomically positioned self-closing lever throttle, wheel pivot and forward/reverse controls provide fast and safe operation.

Rugged tubular steel frame construction. Precise weight distribution yields excellent balance and control to reduce operator fatigue.

Generates from 1,700 to 13,000 ft. lbs. of working torque @ 85 PSI to power open the most stubborn gates.

Precision machined, specially heat treated Grade 4340 tool steel tapered Capstan Drive Fitting with O-ring and pin retainer design.

- Optional rail mount base
- Height adjustable model available



1.800 KC SUPPLY (527.8775)
www.kcsupply.com

Phone 816.753.7676

Fax 816.753.0444

email: kcsupply@kcsupply.com

Railroad Safety Wheel Chocks

Wheel Chocks meet OSHA Regulations 1910.110 (15); 1910.111 (13); 1910.30 (A) (5)

SINGLE CHOCKS HOLD THE CAR IN ONE DIRECTION. DOUBLE CHOCKS HOLD THE CAR IN BOTH DIRECTIONS.



SINGLE CHOCK WITH FLAG

#4011-01....."A" TYPE. EXPOSED RAIL. 13 LBS
#4011-02....."A-1" TYPE. FLUSH RAIL. 13 LBS.



SINGLE CHOCK

#4011-09....."D" TYPE. EXPOSED RAIL. 6 LBS
#4011-10....."D-1" TYPE. FLUSH RAIL. 8 LBS.



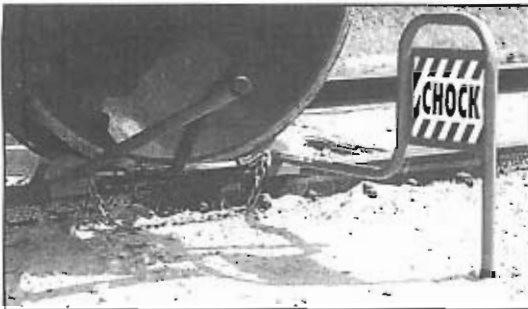
DOUBLE CHOCK

#4011-03....."B" TYPE. EXPOSED RAIL. 12 LBS.
#4011-04....."B-1" TYPE. FLUSH RAIL. 12 LBS.



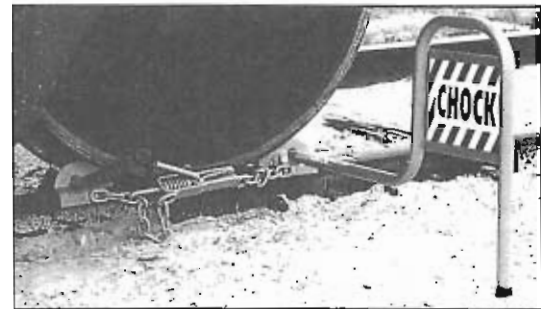
DOUBLE CHOCK WITH CHAIN TIGHTENER

#4011-05....."B-2" TYPE. EXPOSED RAIL. 16 LBS.



DOUBLE CHOCK WITH FLAG

#4011-06....."C" TYPE. EXPOSED RAIL. 16 LBS.
#4011-07....."C-1" TYPE. FLUSH RAIL. 16 LBS.



DOUBLE CHOCK WITH FLAG AND CHAIN TIGHTENER

#4011-08....."C-2" TYPE. EXPOSED RAIL. 20 LBS



4011-11

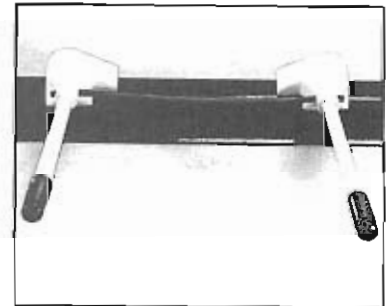
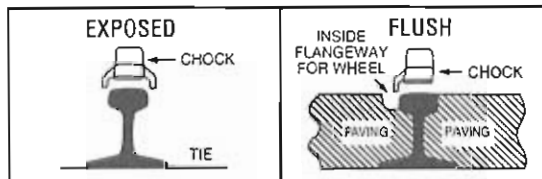
Car Stopper RR Wheel Chock

Slowly-creeping railcars on level track can be brought to a stop and held in place with Car Stopper. Molded urethane chock is squeezed by car wheel, but returns to original shape. 15 lbs.



Heat-treated steel spurs keep the chock from slipping. They can be turned to three new sharp edges and also replaced, thus extending product life.

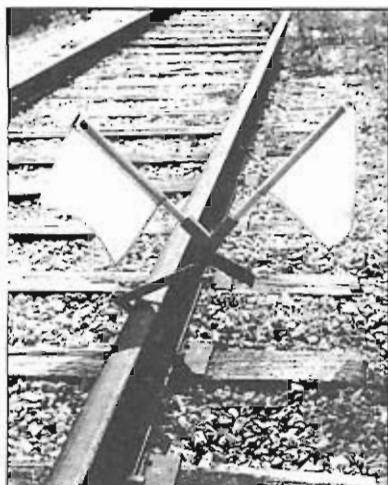
BEFORE ORDERING, FIND OUT WHAT KIND OF RAIL YOU HAVE



4011-12 Urethane Wheel Chocks

Resilient double chock for use with transit, passenger and freight cars. Fits wheels 28" diameter and up. 4 lbs.

PORTABLE SIGN HOLDERS



PORTABLE CLAMP-ON FLAG HOLDER

Steel holder, clamps to rail head. Twin sockets accept 3/4" dia. flag holder. 7 1/2 lbs.

#4015-23

FLAGS NOT INCLUDED

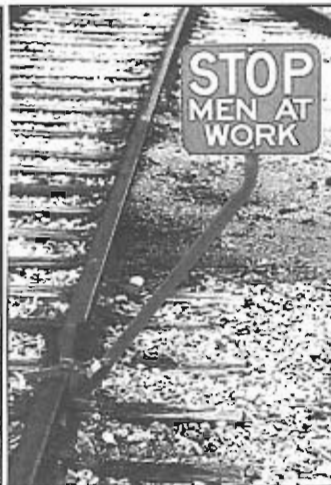


PORTABLE CLAMP-ON, NON LOCKING-TYPE

Steel holder. Clamps to rail head. 7 lbs.

#4015-01

SIGN PLATE NOT INCLUDED



PORTABLE CLAMP-ON LOCKING-TYPE

Can be padlocked to rail sizes 85 lb. to 140 lb. 10 lbs. Lock included.

#4015-07

SIGN PLATE NOT INCLUDED



PORTABLE CLAMP-ON INSULATED

For use near electrified third rails. 4 lbs.

#4015-02

SIGN PLATE NOT INCLUDED

PORTABLE SIGN HOLDER PERMANENT SIGN HOLDERS



PORTABLE TRIPOD

For use on flush rail. Twin sockets can hold flags. 9 lbs.

#4015-04

SIGN PLATE NOT INCLUDED



PERMANENT HINGED

Bolts to base of rail. Holder folds down flat. 15 lbs.

#4015-05

SIGN PLATE NOT INCLUDED



SPIKE-DOWN HINGED

Tie plate base is spiked to tie. Hinged sign holder folds down. 16 lbs.

#4015-06

SIGN PLATE NOT INCLUDED



SIGN PLATES
AVAILABLE
IN RED OR BLUE



Sign plates are 12" x 15", and made of .080" Aluminum Plate with SCOTCH-LITE ReflectORIZED Lettering. 1.5 lbs.

ENGLISH #4015-11

FRANÇAIS #4015-16

BLANK #4015-18

ESPAÑOL #4015-17



1.800 KC SUPPLY (527.8775)
www.kcsupply.com

Phone 816.753.7676

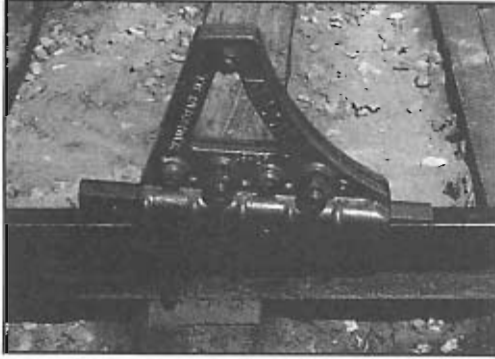
Fax 816.753.0444

email: kcsupply@kcsupply.com

Railcar Stops

Meets OSHA Regulation 1910.176 (1). Made for rail sizes 60-140lb/yd. Impact speed cannot exceed normal switching speed. Car Stops are sold per each but should be used as pairs.

FIXED STOPS

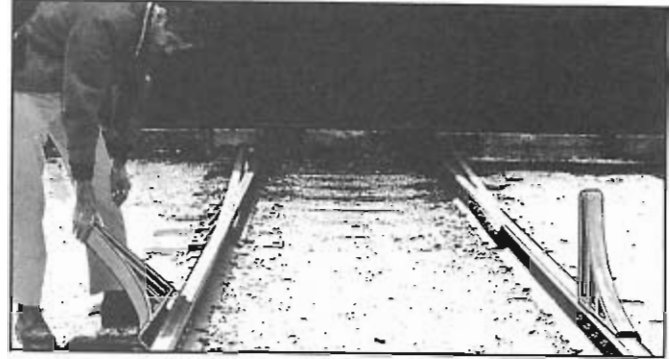


CS-2 SELF-TIGHTENING TYPE

Wedge holds car stop to rail. Car stop is assembled on head of rail by tightening 5 bolts and driving wedge from the rear. The stop stands 15½" above top of rail.

#4016-03.....110 lbs.

HINGED STOPS

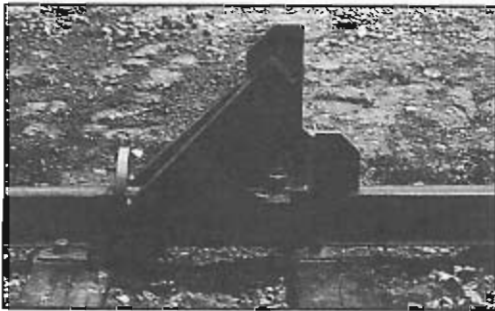


CS-3 HINGED TYPE

Car stop bolts through web of rail. When not in use, stop folds down outside of track and lies flush with top of rail. When erect, stop stands 16½" above rail.

#4016-04-R.....Right hand, 86 lbs.

#4016-04-L.....Left hand, 86 lbs.



CS-4 CUSHIONED TYPE

Car stop utilizes the cushioning ability of the tie and ballast to absorb impact. Easily assembled — just tighten 2 nuts on each block and stop is ready. Height above rails 17".

#4116-01.....175 lbs.



CS-3X HINGED, LOCKING TYPE

Equipped with a hasp, shackle, and padlock. Car stop can be locked in upright or lowered position.

#4016-05-R.....Right hand, 90 lbs.

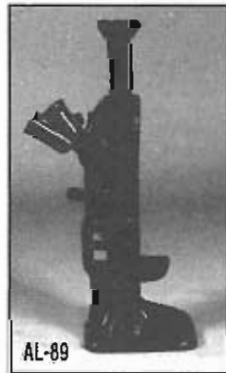
#4016-05-L.....Left hand, 90 lbs.



AL-87



AL-88



AL-89

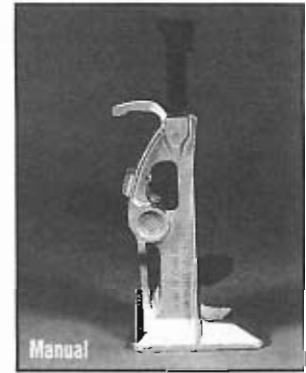
RATCHET LEVER JACKS

Rugged construction permits full capacity to be used on the toe or cap of the jack. Jack works on same principle as automobile tire jack: load is raised or lowered "tooth by tooth." Jack cannot be tripped under load.

Part No.	Style Ref.	Cap Tons	Min. Retr. Height	Lift	Min. Toe Height	Weight Lbs.
#4123-65	AL-87	5	17"	10"	1⅝"	30
#4123-66	AL-88	10	20 ½"	12"	2"	42
#4123-67	AL-89	15	23 ¼"	13"	2 ½"	93



Hydraulic



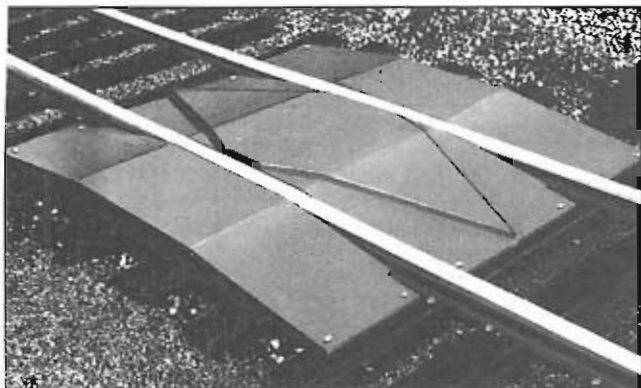
Manual

"QUICK-TRIP" TRACK JACKS

Jacks have "quick trip" feature when under load. Requires skilled operator.

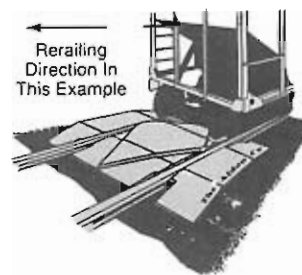
Part No.	Type	Cap. Tons	Retr. Height	Lift	Min. Toe Height	Weight Lbs.
#4123-81	Hydraulic	10	22"	9"	2"	50
#4123-63	Manual	15	11"	5 ¼"	2"	30
#4123-64	Manual	15	22 ½"	13"	2"	49

CAR AND ENGINE RERAILERS

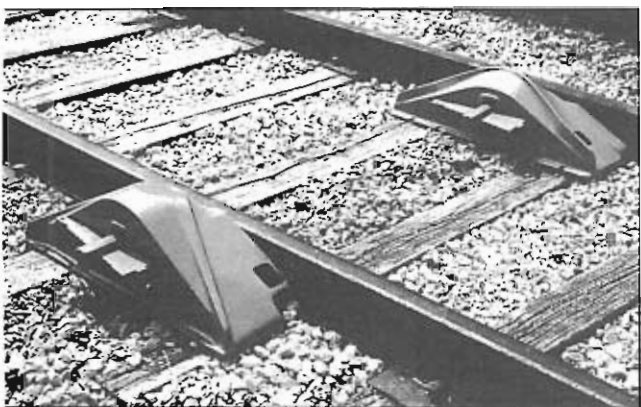


PERMANENT RERAILER

Automatic Two-way rerailing. Raised steel diamond shape handles up to 20 ton load per wheel. Overall length approximately 11 ft. Comes with all necessary support members and fasteners. Customer provides 13 ft. cross-ties in place of existing ties.



#4018-10



"BURLINGTON" STYLE RERAILERS

Double-ended "Burlington" style rerailers are locked to the rails by clamps and wedges and will not slip or kick out during rerailing. One "Inside" and one "Outside" make a pair. Replacers are reversed in direction and exchanged in position to suit different derailed wheel situations.

ORDER IN PAIRS. (1 Inside, 1 Outside) USE IN PAIRS.

Part No.	Style	Rail Size	Wt.
#4118-01 - I	A Inside	70-85 lbs.	100#
#4118-01 - O	A Outside	70-85 lbs.	100#
#4118-02 - I	B Inside	90-140 lbs.	113#
#4118-02 - O	B Outside	90-140 lbs.	113#



STRADDLE-TYPE

The most practical design. All wheels are rerailed with one placement of rerailers. Chain & hook holds rerailers securely to rails.

ORDER IN PAIRS. (1 Left, 1 Right) USE IN PAIRS.

Part No.	Style	Rail Size	Wt.
#4018-01 - L	H-7 Left	90-140 lbs.	160#
#4018-01 - R	H-7 Right	90-140 lbs.	160#
#4018-02 - L	E-6 Left	70-110 lbs.	135#
#4018-02 - R	E-6 Right	70-110 lbs.	135#
#4018-03	D Universal	45-70 lbs.	55#



PORTABLE DERAILS

DR-3 SINGLE-END TYPE

Used where temporary protection of workers and tracks are required. Derails in one direction only. Step-bar butts up against tie to secure derail. Set screw allows proper derail fit to varying rail sizes. Clamp assembly accepts customer's padlock. 52 lbs. FITS RAIL 75-136#

SIGN & HOLDER INCLUDED.

Left Throw
#4114-06

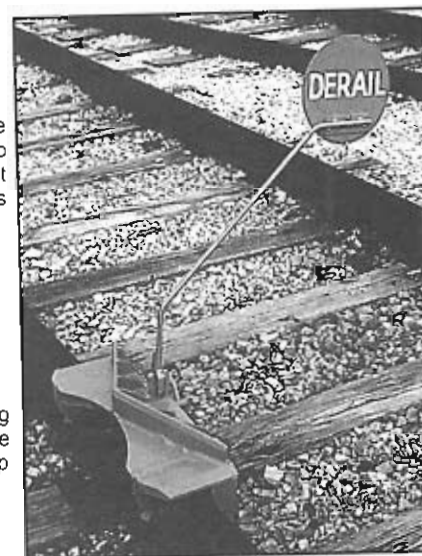
Right Throw
#4114-07

DR-5 DOUBLE-END TYPE

Derails in both directions, without the need to change locking wedge position. Dual step bars butt against ties to secure derail. Set screw adjusts derail fit to various rail sizes. Clamp assembly accepts customer's padlock. 65 lbs. FITS RAILS 75-136#/yd.

SIGN & HOLDER INCLUDED.

#4114-09



1.800 KC SUPPLY (527.8775)
www.kcsupply.com

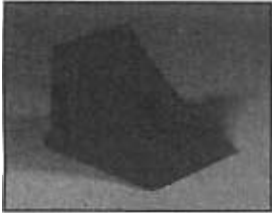
Phone 816.753.7676

Fax 816.753.0444
email: kcsupply@kcsupply.com

123

TRUCK AND TRAILER WHEEL BLOCKS

OSHA REGULATIONS 1910.178(K)(1), (3), & (7); 1910.111(F)(9); AND 1910.261(C)(7) REQUIRE the use of wheel blocks when unloading or loading semi-trailers, and when parking a trailer or truck.



URETHANE (UWC-1)

W x L x H
7 1/2" 11" 8"

SAFETY ORANGE

#4112-01 Wt. 4.5 Lbs.



ALUMINUM (HWC)

W x L x H
7" 10 1/2" 8"

#4112-03 Wt. 7 Lbs.



ALUMINUM w/FLAG (AL-107)

W x L x H
7" 10 1/2" 8"

SAFETY YELLOW

#4012-02.....Wt. 13 1/2 Lbs.

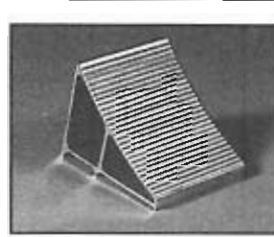


DUCTILE IRON (AL-96)

W x L x H
10" 10 1/2" 10 1/2"

SAFETY YELLOW

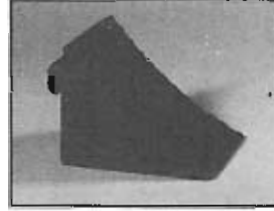
#4012-04 Wt. 23 Lbs.



ALUMINUM (LWC)

W x L x H
6" 7" 6"

#4012-01 Wt. 4 Lbs.



RUBBER (RWC)

W x L x H
7" 10" 8"

#4012-05 Wt. 11 Lbs.



DUCTILE IRON (AL-95)

W x L x H
9 1/2" 8" 8 1/2"

SAFETY YELLOW

#4012-06 Wt. 14 Lbs.

SPECIAL PURPOSE WHEEL BLOCKS...

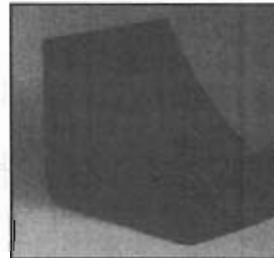


ALUMINUM (AL-120)

For Light-Duty & Pick-up Trucks Only

W x L x H
6" 7" 6"

#4112-04 Wt. 4 Lbs.



URETHANE (UWC-2)

For Off-Road Vehicles Only

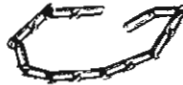
W x L x H
14" 17" 14"

SAFETY ORANGE

#4112-05 Wt. 27 Lbs.

WHEEL BLOCK ACCESSORIES

• **CHAIN** Straight link, bright zinc-plated chain for securing wheel blocks to docks — available loose or connected to wheel blocks. Specify which is desired and also length desired.



#4012-07

#4012-08 ATTACHING FEE Per Block

• **CHOCK SAFETY SIGN** — 10" x 14" Butyrate. Black letters on yellow field.

#4112-06

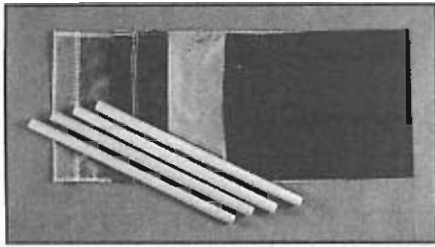


CAUTION:

1. Blocks must be used on firm surfaces for best performance.
2. Blocks should be used in pairs.
3. Use #4112-04 (AL-120) for utility trucks only. Do not use on any highway semi-trailer. Do not use on forklift wheels.
4. #4112-05 is for off-the-road earth-moving vehicles only.

HOW TO ORDER:

1. What model Block do you want? How many pieces? (Blocks are sold on an "each" basis, even though they should be used in pairs.)
2. Do you want chain with the Blocks? What length of chain? Loose or connected to each Block? Do you want a pair of Blocks linked by chain? If so, what length of chain?



NYLON FLAGS W/HOLDER

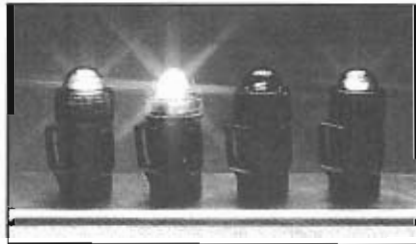
Size 12"x15" with hemmed sleeve, for 18" long dowel staff. 1 lb.

- #4015-12 Blue
- #4015-20 Red
- #4015-21 Yellow
- #4015-22 Green

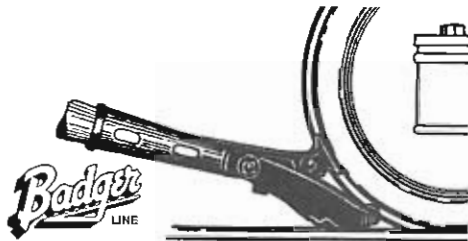
MAGNETIC BASE FLASHING LIGHT

Attaches to the rail or any other steel surface. Also can be clipped to shirt pocket for worker's protection. Uses single D-cell battery. 1/2 lb.

- #4115-07 Blue Lens
- #4115-11 Red Lens
- #4115-12 Clear Lens
- #4115-16 Amber Lens



RAILROAD CAR MOVERS



Badger No. 5 CAR MOVER

A standard duty car mover with ample power to move the heaviest car, yet designed to move light loads of empties at surprising speed. Leverage is compound — a pinch bar action with a forward pushing elongating toggle action. Light and well balanced, the Badger No. 5 is easy to transport and handle. Popular inverted "V" grip spurs anchor the car mover to the track effectively.

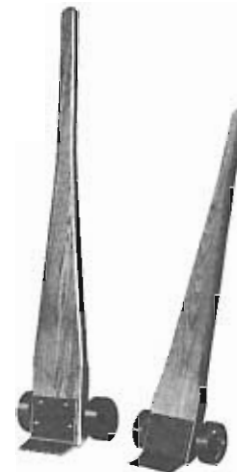
MANUAL CAR MOVERS

- #01100 Power King w/ hand guard
- #01900 No. 249 Badger
- #01500 No. 5 Badge

ROLLER PRY TRUCK

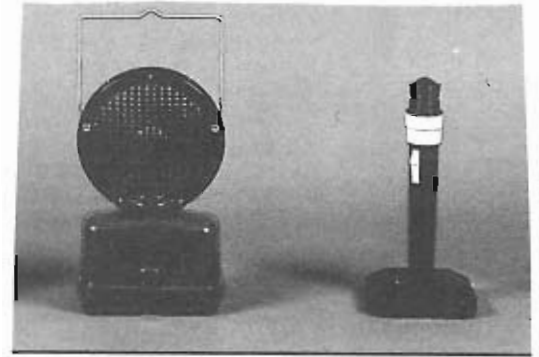
Move heavy crates, machinery, and other bulky objects quickly and easily. Loads can be raised 9 inches for placing on skids. Ruggedly constructed with select Red Oak handles, alloy steel nose plate, semi-steel wheels and over-size steel axle. Also available with hard or soft tread rubber wheels at reduced capacities.

Badger Pry Trucks are most useful when used in pairs.



Model	Lifting Capacity	Length
4	3000 lbs	4 ft
5	3500 lbs	5 ft
6	4000 lbs	6 ft
7	5000 lbs	7 ft

SWITCH BROOM



FLASHING BLUE LIGHT

w/Handle. 3 lbs.

#4115-04

FLASHING BLUE SIGNAL LIGHT

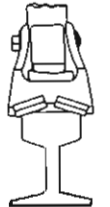
Weighted base holds light upright. 1 lb.

#4115-02

CAR MOVER

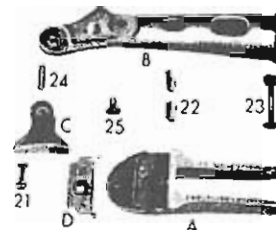


HAND GUARD



Two-Piece Spur

No. 5 NEW BADGER



ITEM CODE NO.	NO.	Part Description
01501	A	Shoe, Spur & Plate
01502	A	Shoe Only with Bolt
01503	B	Socket, Cam & Bolt
01504	B	Socket Only with Bolt
01505	C	Cam with Rivot
01506	D	Spur Plate with Bolt
01521	21	Bolt for Spur Plate
01523	23	Bolt for Shoe No. A
01524	24	Rivet for Cam No. C
01525	25	Toe Rivet for Shoe A
01022	22	Spurs (2 per set,
01020	A	Handle (58"
01021	A	Handle (47"