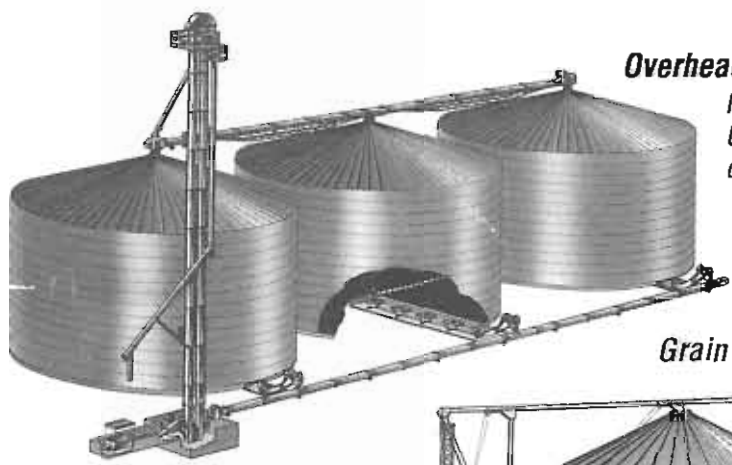
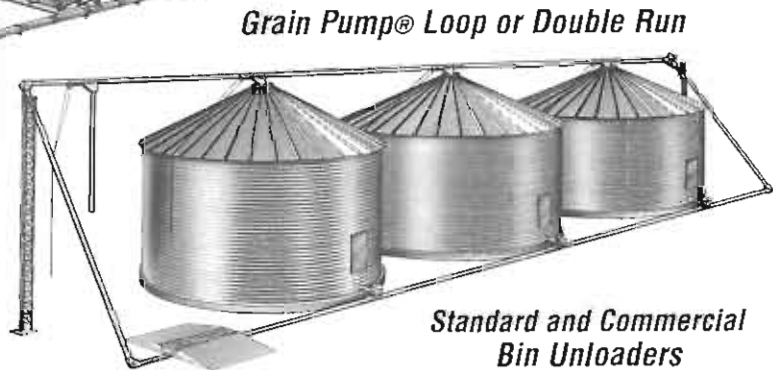


*Swing Away Augers*



**Overhead and Return Conveying Systems**  
*Mass-ter Mover®, Mass-ter Flow,  
 U-trough and tube type  
 conveying systems*

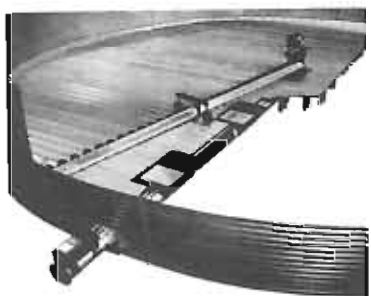


**Grain Pump® Loop or Double Run**



*Power Heads*

**Standard and Commercial  
 Bin Unloaders**



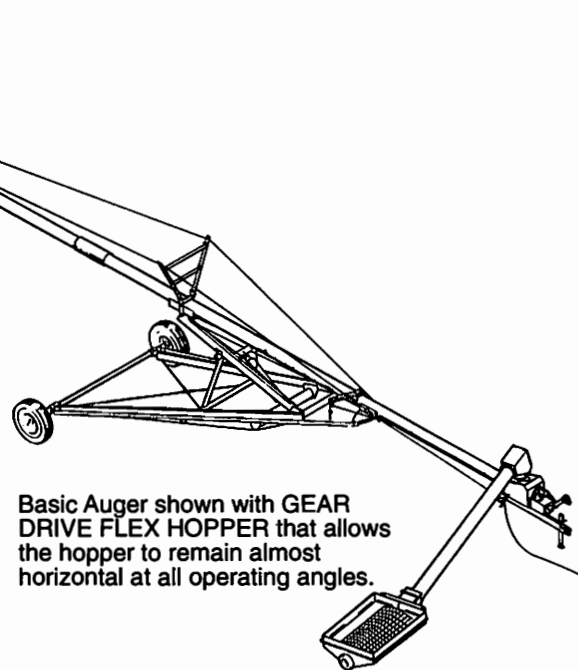
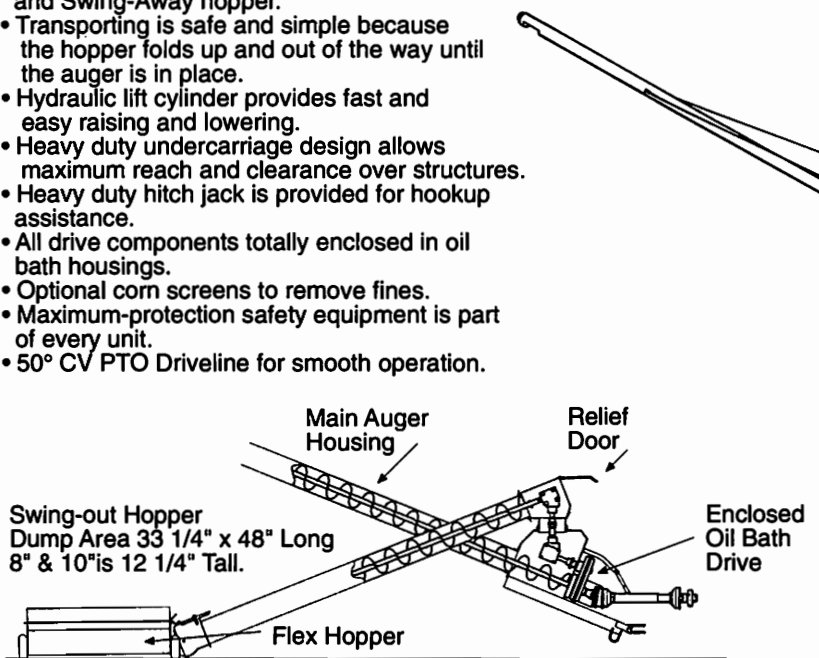
**Also Available  
 Utility and Feeder  
 System Augers**

# Swing Away Gear Drive PORTABLE AUGER with FLEX HOPPER

## FEATURES:

- Tractor PTO powers the main auger and Swing-Away hopper.
- Transporting is safe and simple because the hopper folds up and out of the way until the auger is in place.
- Hydraulic lift cylinder provides fast and easy raising and lowering.
- Heavy duty undercarriage design allows maximum reach and clearance over structures.
- Heavy duty hitch jack is provided for hookup assistance.
- All drive components totally enclosed in oil bath housings.
- Optional corn screens to remove fines.
- Maximum-protection safety equipment is part of every unit.
- 50° CV PTO Driveline for smooth operation.

## SPECIFICATIONS



	8" x 52'	8" x 62'	8" x 72'	10" x 52'	10" x 62'	10" x 72'
Tractor Hydraulics for Auger Lift	800 PSI	900 PSI	1500 PSI	1000 PSI	1200 PSI	1800 PSI
Approx. P.T.O. H.P.	40	50	60	60	60	70

### 8" SWING AWAY GEAR DRIVE AUGER

CAPACITY: 3200 BPH  
 UNDERCARRIAGE: Combination round & rectangular High strength tubing w/hydraulic cylinder lifting mechanism  
 AUGER SHAFT: 1.9 O.D. tubing  
 FLIGHT GAUGE: 11 Ga. 1/4" Inlet  
 AUGER LENGTHS: 52', 62', & 72'  
 AUGER TUBE: 14 Ga. Painted or 14 Ga. Galvanized  
 DRIVE : PTO w/50° CV and Shear Mechanism

### INCLUDES:

14 GA. HOUSING  
 HEAVY DUTY JACK  
 HYDRAULIC LIFT  
 CYLINDER UNDERCARRIAGE  
 CHAIN AND GEAR DRIVE COMPONENTS  
 TOTALLY ENCLOSED IN OIL BATH HOUSINGS  
 TAPERED ROLLER WHEEL BEARINGS  
 50° CV PTO DRIVELINE

### 10" SWING AWAY GEAR DRIVE AUGER

CAPACITY: 4500 BPH  
 UNDERCARRIAGE: Combination round & rectangular High strength tubing w/hydraulic cylinder lifting mechanism  
 AUGER SHAFT: 2.375 O.D. tubing  
 FLIGHT GAUGE: 3/16" - 1/4" Inlet  
 AUGER LENGTHS: 52', 62', & 72'  
 AUGER TUBE: 14 Ga. Painted or 14 Ga. Galvanized  
 DRIVE : PTO w/50° CV and Shear Mechanism

### INCLUDES:

14 GA. HOUSING  
 HEAVY DUTY JACK  
 HYDRAULIC LIFT  
 CYLINDER UNDERCARRIAGE  
 CHAIN AND GEAR DRIVE COMPONENTS  
 TOTALLY ENCLOSED IN OIL BATH HOUSINGS  
 TAPERED ROLLER WHEEL BEARINGS  
 50° CV PTO DRIVELINE



1.800 KC SUPPLY (527.8775)  
 www.kcsupply.com

Phone 816.753.7676  
 email: kcsupply@kcsupply.com

Fax 816.753.0444

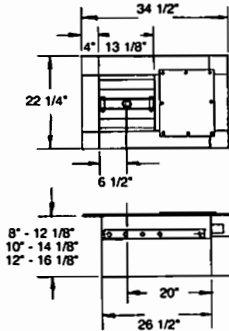
# COMMERCIAL BIN UNLOADING SERIES

This is an unloading system available in 8", 10" and 12" for commercial applications and larger diameter grain bins. All components of this series are designed for demanding commercial application. 8" and 10" unloading systems are available for bin diameters from 24' through 92' and 12" from 24' through 120'. Even in the smaller bins we recommend consideration of this series. The application and anticipated usage level should be your guide in selection.

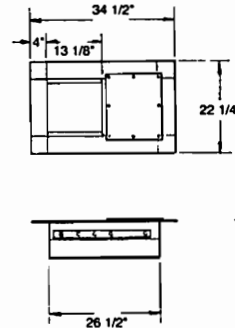
All bin wells are constructed of heavier gauges and the heavy gates operate on rollers. Rack and pinion openers are available for center and intermediate wells.

## COMMERCIAL WELLS

All wells are painted material and furnished with full gate which operates on rollers.



**CENTER WELL**



**INTERMEDIATE WELL**

Catalog No.	Description	Weight
BJ0803W	8" Center	74 lbs.
BJ1003W	10" Center	76 lbs.
BJ1203W	12" Center	80 lbs.

Catalog No.	Description	Weight
BJ0804W	8" Int	52 lbs.
BJ1004W	10" Int	53 lbs.
BJ1204W	12" Int	54 lbs.

NOTE: Center Wells cannot be shipped via UPS.

## CONTROL PIPE KITS FOR COMMERCIAL BIN WELLS

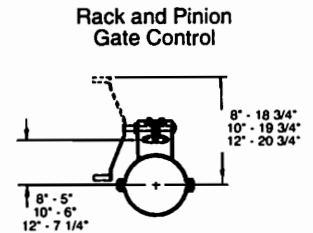
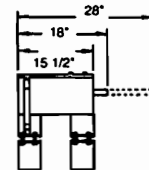
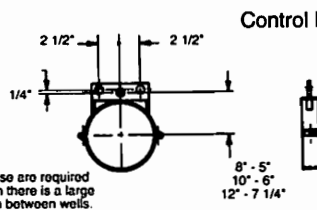
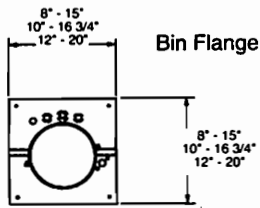
The Commercial Series is designed with one 1/2" pipe to the center well. An additional 1/2" pipe on each side of the center gate pull allows individual control of intermediate wells. Rack and Pinion Control (below) makes gate operation easy.

Each kit includes the pipe necessary to control the gates as described above. Kit may be used on 8", 10" or 12" systems.

Catalog No.	Bin Dia.	Weight
BJ1224C	24'	20
BJ1227C	27'	22
BJ1230C	30'	24
BJ1233C	33'-34'	27
BJ1236C	36'	34
BJ1237C	37'-39'	37
BJ1240C	40'	38
BJ1242C	42'	39
BJ1248C	48'-49'	45
BJ1254C	54'-55'	51
BJ1260C	60'	53
BJ1263C	63'	60

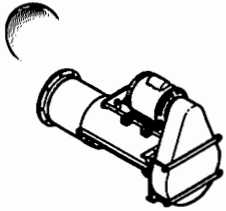
Catalog No.	Bin Dia.	Weight
BJ1268C	68'-69'	63
BJ1272C	72'	66
BJ1275C	75'	72
BJ1278C	78'	73
BJ1280C	80'	75
BJ1282C	82'	77
BJ1290C	90'	85
BJ1292C	92'	92
BJ1297C	105'	105
BJ1298C	113'	111
BJ1299C	120'	117

## BIN WELL ACCESSORIES



Description	8"		10"		12"	
	Catalog No.	Weight	Catalog No.	Weight	Catalog No.	Weight
Bin Flange	B1219C	5	BJ1001W	7	BJ1201W	8
Rack & Pinion Control	BJ0802W	32	BJ1002W	33	BJ1202W	34
Control Rod Guides	BJ0805W	3	BJ1005W	3	BJ1205W	4

# COMMERCIAL POWER HEADS

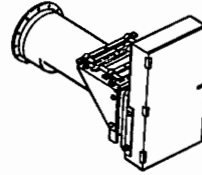


## 8" & 10" HORIZONTAL POWER HEAD STANDARD BELT DRIVE

Standard Belt Drive

**8" Horizontal Power Head** — 8" x 24" 14 ga. galvanized tube with flange. Head Flight is 7 ga. mounted on 1.9" O.D. tube. 15" auger sheave. Use 3 1/2" O.D. motor sheave for 408 RPM. Capacity up to 2000 BPH.

Catalog No.	Number of Drive Belts	Bin Diameter	Wt.
BJ0824DH	2	24' - 63'	86
BJ0868DH	3	68' - 92'	91



## 10" & 12" HORIZONTAL POWER HEAD REDUCER DRIVE

Reducer Drive

**10" Horizontal Power Head** — 10" x 30" 12 ga. galvanized tube with flange. Head Flight is 7 ga. mounted on 2 3/8" O.D. tube. 7.4" auger sheave. Use 5.2" P.D. motor sheave for 313 RPM and capacity up to 3000 PBH or use 6.4" P.D. motor sheave for 385 RPM and capacity up to 4000 BPH.

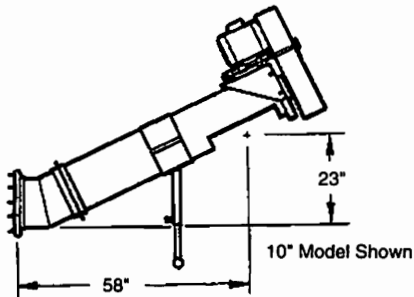
Catalog No.	Number of Drive Belts	Bin Diameter	Wt.
BJ1024DHR	2	24' - 55'	198
BJ1060DHR	3	60' - 75'	202

**10" Horizontal Power Head** — 10" x 30" 12 ga. galvanized tube with flange. Head Flight is 7 ga. mounted on 2 3/8" O.D. tube. 15" auger sheave. Use 3" O.D. motor sheave for 350 RPM. Capacity up to 4000 BPH.

Catalog No.	Number of Drive Belts	Bin Diameter	Wt.
BJ1024DH	2	24' - 34'	74
BJ1036DH	3	36' - 92'	76

**12" Horizontal Power Head** — 12" x 30" 12 ga. galvanized tube with flange. Head flight is 7 ga. mounted on a 2 7/8" O.D. tube. Includes oil bath reducer. Furnished with 6.6 P.D. sheave. Use 4.6" P.D. sheave for 263 RPM. Maximum capacity is 4500 BPH.

Catalog No.	Number of Drive Belts	Bin Diameter	Wt.
BJ1224DH	3	24' - 72'	233
BJ1275DH	4	75' - 120'	255



## 8" & 10" 25° UNLOADERS

**8" to 10" 25° Power Head** — 10" x 5' inclined auger includes adapter to 8" tube, stand and drive. Housing is 12 ga. galvanized. Furnished with 15" diameter sheave. Use 3 1/2" O.D. motor sheave for 408 RPM. Available in 2 or 3 belt drive. Maximum capacity is 2000 BPH.

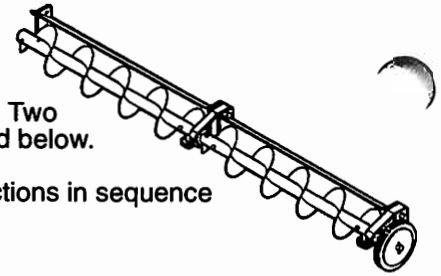
Catalog No.	Number of Belt Drives	Bin Diameter	Wt.
B1262B	2	24' - 36'	183
B1263B	3	37' - 75'	185

**10" to 12" 25° Power Head** — 12" x 5' inclined auger includes adapter to 10" tube, stand and drive. Housing is 12 ga. galvanized. Furnished with 15" diameter sheave. Use 3" O.D. motor sheave for 350 RPM. Available in 2 or 3 belt drive. Maximum capacity is 4000 BPH.

Catalog No.	Number of Belt Drives	Bin Diameter	Wt.
B1362B	2	24' - 55'	306
B1363B	3	60' - 75'	308

# COMMERCIAL KLEAN SWEEPS

Commercial Klean Sweeps are furnished with the Flight and Shield in sections no longer than 9' - 9 3/4" long. Sweeps for 48' bins and larger include a Sweep Carrier Assembly. Two carriers are furnished with units for 90' bins and larger. Additional carriers can be ordered below.



It is recommended that the center portion of the sweep be used first and then add on sections in sequence until the entire sweep has been assembled and the bin unloaded.

## CAPACITY CHART

### 68 Capacity (5" O.D. Flight)

1750 Motor			
Driver Pulley	Driven Pulley	RPM	Capacity
3.0" O.D.	12" O.D.	258	620
3.8" O.D.	12" O.D.	390	936

Capacity rated at approximately 240 BPH per 100 RPM.

### 1012 Capacity (9" O.D. Flight)

1750 Motor			
Driver Pulley	Driven Pulley	RPM	Capacity
5.0" O.D.	12" O.D.	250	3200
6.0" O.D.	12" O.D.	290	3712

Capacity rated at approximately 1280 BPH per 100 RPM.

### 810 Capacity (7" O.D. Flight)

1750 Motor			
Driver Pulley	Driven Pulley	RPM	Capacity
3.5" O.D.	12" O.D.	300	1560
4.5" O.D.	12" O.D.	390	2028

1750 Motor w/4 to 1 Reducer Drive			
Driver Pulley	Driven Pulley	RPM	Capacity
4.6" O.D.	5.2" P.D.	390	1560

Capacity rated at approximately 520 BPH per 100 RPM.

### 1214 Capacity (12" O.D. Flight)

1750 Motor w/3 to 1 Chain Drive			
Driver Pulley	Driven Pulley	RPM	Capacity
3.0" O.D.	12" O.D.	146	3,942
3.5" O.D.	12" O.D.	170	4,590
4.5" O.D.	12" O.D.	218	5,886

1750 Motor w/5 to 1 Gear Drive			
Driver Pulley	Driven Pulley	RPM	Capacity
4.6" O.D.	9.4" P.D.	181	4,887
5.0" O.D.	9.4" P.D.	196	5,292
5.6" O.D.	9.4" P.D.	218	5,886
6.0" O.D.	9.4" P.D.	226	6,102

Capacity rated at approximately 2700 BPH per 100 RPM.

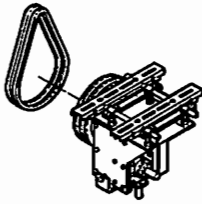
## 810 SERIES COMMERCIAL KLEAN SWEEPS FLIGHT & SHIELD

7" O.D. 7 ga. 1.9" O.D. tube.

These units are designed to match the capacity of an 8" or 10" Unloading System.

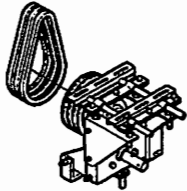
Catalog No.	Description	Sections	Elec. H.P.	Bin Dia.	WT.	Center of Bin to Outside of Sweep Wheel
BK1024S	Klean Sweep	2	3	24'	129	11' 4 1/2"
BK1027S	Klean Sweep	2	3	27'	140	12' 10 1/2"
BK1030S	Klean Sweep	2	3	30'	150	14' 2 3/4"
BK1033S	Klean Sweep	2	3	33'	170	15' 10 1/2"
BK1034S	Klean Sweep	2	3	34'	173	16' 5"
BK1036S	Klean Sweep	2	3	36'	175	17' 4 3/4"
BK1037S	Klean Sweep	2	3	37'	189	17' 11"
BK1039S	Klean Sweep	2	3	39'	191	18' 10 3/4"
BK1040S	Klean Sweep	2	3	40'	194	19' 4 1/2"
BK1042S	Klean Sweep	2	3	42'	196	20' 5"
BK1048S	Klean Sweep	3	5	48'	265	23' 5"
BK1049S	Klean Sweep	3	5	49'	271	23' 10 1/4"
BK1054S	Klean Sweep	3	5	54'	286	26' 5 1/4"
BK1055S	Klean Sweep	3	5	55'	303	26' 10 1/4"
BK1060S	Klean Sweep	3	5	60'	314	29' 5 1/4"
BK1063S	Klean Sweep	4	7 1/2	63'	342	30' 11 1/2"
BK1068S	Klean Sweep	4	7 1/2	68'	358	33' 5 1/4"
BK1069S	Klean Sweep	4	7 1/2	69'	366	33' 10 1/2"
BK1072S	Klean Sweep	4	7 1/2	72'	373	35' 5 3/4"
BK1075S	Klean Sweep	4	7 1/2	75'	396	36' 11 1/2"
BK1078S	Klean Sweep	4	7 1/2	78'	401	38' 5 3/4"
BK1080S	Klean Sweep	4	7 1/2	80'	407	39' 5 1/2"
BK1082S	Klean Sweep	4	7 1/2	82'	420	40' 5 1/4"
BK1090S	Klean Sweep	5	7 1/2	90'	492	44' 6 1/4"
BK1092S	Klean Sweep	5	7 1/2	92'	498	45' 6"

## JACK SHAFT REDUCTION AND REDUCER DRIVE



**810 Series Jack Shaft Drive**  
 Furnished with 12.0" Auger Sheave  
 With 8" System use 3.5" O.D. Sheave for 300 RPM  
 With 10" System use 4.5" O.D. Sheave for 390 RPM

Catalog No.	H.P. REQ'D	No. of Belts	Bin Diameter	Wt.
BK1024DS	3-5	2	24' - 60'	97
BK1063DS	7 1/2	3	63' - 75'	100
BK1078DS	10 -15	3	78' - 92'	106



**810 Series Reducer Drive**  
 Furnished with 5.2" P.D. Auger Sheave  
 Use 4.6" P.D. Motor Sheave for 390 RPM.

Catalog No.	H.P. REQ'D	No. of Belts	Bin Diameter	Wt.
BK1048DSR	5 - 7 1/2	2	48' - 92'	127

## 1012 SERIES COMMERCIAL KLEAN SWEEP FLIGHT & SHIELD WITH DRIVE

9" O.D. 1/4" Flight on 2 7/8" O.D. tube.

These units are designed to match the capacity of a 10" or 12" Unloading System.  
 For 10" unloading system, use 5.0" O.D. motor pulley for sweep speed of 250 RPM. For 12" unloading system, use a 6.0" O.D. motor pulley for sweep speed of 290 RPM.

Catalog No.	Description	Sections	No. of Belts	Elec. H.P.	Bin Dia.	Wt.	Center of Bin to Outside of Sweep Wheel
BK1224SD	Klean Sweep	2	1-B	3	24'	163	11' 5 5/8"
BK1227SD	Klean Sweep	2	1-B	3	27'	182	12' 11 5/8"
BK1230SD	Klean Sweep	2	1-B	3	30'	195	14' 3 7/8"
BK1233SD	Klean Sweep	2	1-B	3	33'	211	15' 11 5/8"
BK1234SD	Klean Sweep	2	1-B	3	34'	213	16' 6 1/8"
BK1236SD	Klean Sweep	2	1-B	3	36'	214	17' 5 7/8"
BK1237SD	Klean Sweep	2	1-B	3	37'	233	18' 1 1/8"
BK1239SD	Klean Sweep	2	1-B	5	39'	243	18' 11 7/8"
BK1240SD	Klean Sweep	2	1-B	5	40'	247	19' 5 5/8"
BK1242SD	Klean Sweep	2	1-B	5	42'	257	20' 6 1/8"
BK1248SD	Klean Sweep	3	2-B	5	48'	334	23' 6 1/8"
BK1249SD	Klean Sweep	3	2-B	5	49'	337	23' 11 3/8"
BK1254SD	Klean Sweep	3	2-B	5	54'	366	26' 6 3/8"
BK1255SD	Klean Sweep	3	2-B	5	55'	373	26' 11 3/8"
BK1260SD	Klean Sweep	3	2-B	7 1/2	60'	396	29' 6 3/8"
BK1263SD	Klean Sweep	4	2-B	7 1/2	63'	435	31' 1"
BK1268SD	Klean Sweep	4	2-B	7 1/2	68'	456	33' 6 3/4"
BK1269SD	Klean Sweep	4	2-B	7 1/2	69'	466	34' 0"
BK1272SD	Klean Sweep	4	2-B	7 1/2	72'	478	35' 7 1/4"
BK1275SD	Klean Sweep	4	2-B	7 1/2	75'	494	37' 1"
BK1278SD	Klean Sweep	4	2-B	10	78'	508	38' 7 1/4"
BK1280SD	Klean Sweep	4	2-B	10	80'	518	40' 1/2"
BK1282SD	Klean Sweep	4	2-B	10	82'	528	40' 6 3/4"
BK1290SD	Klean Sweep	4	2-B	10	90'	617	44' 7 3/8"
BK1292SD	Klean Sweep	5	2-B	10	92'	627	45' 7 1/8"
BK1297SD	Klean Sweep	5	2-B	10	105'	713	51' 6 1/8"
BK1298SD	Klean Sweep	5	2-B	10	113'	749	55' 6 1/8"
BK1299SD	Klean Sweep	6	2-B	15	120'	785	59' 3/8"

## COMMERCIAL KLEAN SWEEP ACCESSORIES

Sweep Carrier

Sweep Walker

Catalog No.	Description	Wt.	Catalog No.	Description	Wt.
BK0800W	Used on 68, 810 & 1012 Series	28	BK1201W	Used on 1012 Series Only	26

## REPLACEMENT UHMW WHEELS for SWEEPS



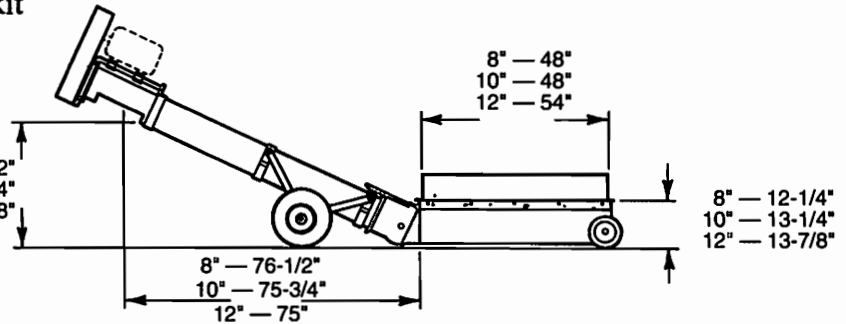
## HOPPER with FLEX ANGLE

- Available with Electric or Hydraulic Drive (12" - Electric Only).
- **Hydraulic Drive requires a volume of 14 GPM at 1850 PSI for proper hopper performance**
- Complete w/ undercarriage and wheel kit
- Special lengths are available
- Flex angle incline adjustment
- Add flexibility to your grain handling
- Easy to move and easy to use
- Incline tube may be extended

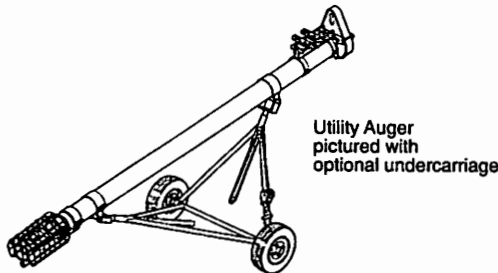
## SPECIFICATIONS

	8"	10"	12"
Tube	14 ga.	14 ga.	12 ga.
Flight Shaft	1.9" O.D.	2.375" O.D.	2.875" O.D.
Flighting	7 ga.	7 ga.	7 ga.

Use 3.5" Motor Sheave — 8" & 10"-2B, 12"-3B



CATALOG NO.	DESCRIPTION	Weight
A8290F	8" Hutch Hopper with Electric Drive (Use 3 H.P. Motor)	359 lbs.
A8291F	8" Hutch Hopper with Hydraulic Drive	337 lbs.
A1090F	10" Hutch Hopper with Electric Drive (Use 5 H.P. Motor)	493 lbs.
A1091F	10" Hutch Hopper with Hydraulic Drive	451 lbs.
A1290F	12" Hutch Hopper with Electric Drive (Use 7.5 H.P. Motor)	668 lbs.



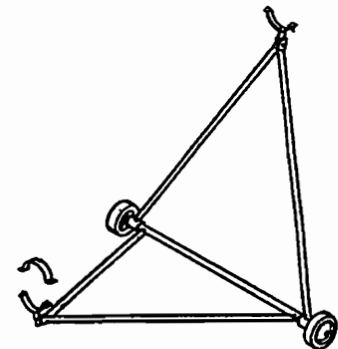
## 90° Spout With Flex Tube



F4052A	4" x 90° Spout w/2'Flex	5 lbs.
--------	-------------------------	--------

## Utility Augers

F4011U	4" x 11'	57 lbs.
F4015U	4" x 15'	72 lbs.
F4020U	4" x 20'	85 lbs.
F6011U	6" x 11'	114 lbs.
F6016U	6" x 16'	145 lbs.
F6021U	6" x 21'	170 lbs.
F6027U	6" x 27'	208 lbs.
F6033U	6" x 33'	240 lbs.
F6041U	6" x 41'	280 lbs.
F8011U	8" x 11'	187 lbs.
F8016U	8" x 16'	230 lbs.
F8021U	8" x 21'	261 lbs.
F8027U	8" x 27'	337 lbs.
F8033U	8" x 33'	394 lbs.
F8041U	8" x 41'	497 lbs.
F8053U	8" x 53'	611 lbs.
F1011U	10" x 11'	255 lbs.
F1016U	10" x 16'	355 lbs.
F1021U	10" x 21'	455 lbs.
F1031U	10" x 31'	657 lbs.
F1041U	10" x 41'	829 lbs.



## \* Undercarriage

F4060A	4" Undercarriage	46 lbs.
F1140C	6" Undercarriage	48 lbs.
F6061A	6" Undercarriage w/winch	202 lbs.
F1240C	8" Undercarriage	47 lbs.
F8061A	8" Undercarriage w/winch	203 lbs.
F1340C	10" Undercarriage w/winch	207 lbs.

\* Undercarriage designed for use with one piece housing up to 33' long.