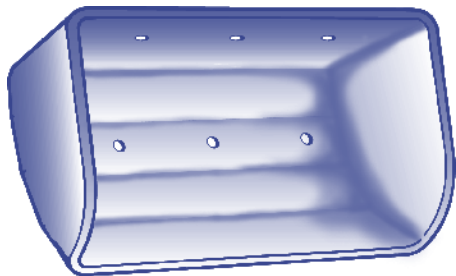


**VENTED ELEVATOR BUCKETS
FOR STYLE CC-HD, CC-XD & U-HD AGRICULTURAL BUCKETS
AVAILABLE IN FIVE STANDARD PATTERNS**

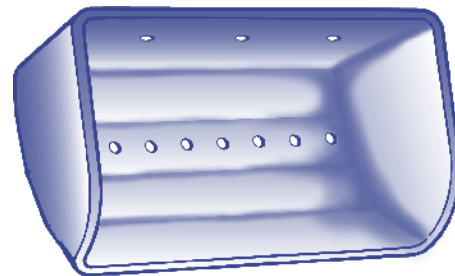
A vented bucket can improve the efficiency of some bucket elevators when handling certain products. On **dense materials** such as flour, meals and mash feeds, the vents allow air to escape through the cup as it fills, which permits the cup to fill more completely. During discharge air can return through the cups as it empties, thus preventing a vacuum that could hold some of the product in the cup and cause backlegging. On extremely **light materials** such as alfalfa meal, screenings and bran, a vented bucket not only minimizes blowing of the product during loading and discharge, but also reduces air turbulence in the leg as the bucket travels empty down the return side of the elevator. A reduction in air currents minimizes the vacuum which can draw a light product through the down leg and back to the boot.

Tapco has five standard patterns available which offer varying amounts of air release for the handling of most products. Special patterns and hole diameters will be quoted upon request. NOTE: Most steel bucket manufacturers use vent holes with 1/8" to 5/32" diameters. These small holes, if used in the Tapco nonmetallic bucket, would soon become clogged with product due to our thick wall sections. For this reason our standard vent diameters are 9/32" and 11/32". **NOTE: For extremely flowable materials, (Rapeseed, etc.) contact KC Supply for venting recommendations.**



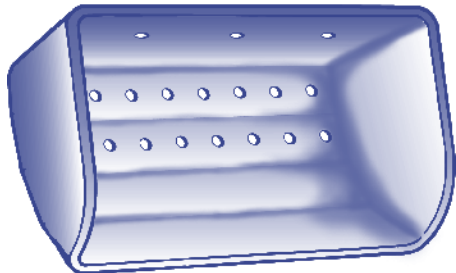
Vent Pattern 1

Same hole diameter, centers, and number of holes in body as mounting holes in back.



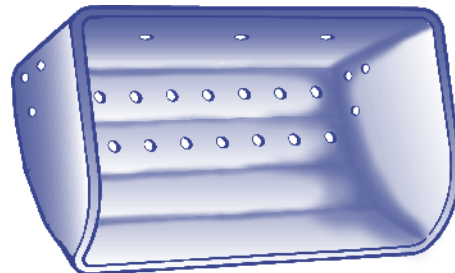
Vent Pattern 2

One row of 9/32" or 11/32" holes in body on 1-1/8" centers.



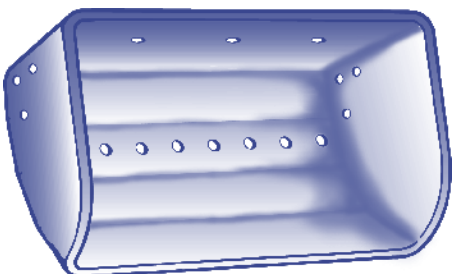
Vent Pattern 3

Two rows of 9/32" or 11/32" holes in body on 1-1/8" centers.



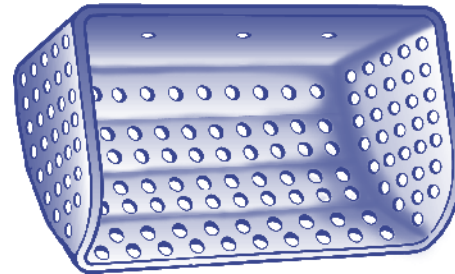
Vent Pattern 4

Two rows of 9/32" or 11/32" holes in body on 1-1/8" centers, three holes each end.



Vent Pattern 5

One row of 9/32" or 11/32" holes in body on 1-1/8" centers, three holes each end.



Custom Venting

Any number of rows of holes in body, extending all the way up to the front lip if desired. Ends can be vented with a few holes, or totally vented as shown. Hole diameters from 1/8" through 17/32". Contact KC Supply for venting recommendations.



1.800.527.8775



VENTING TABLE

STYLE CC-HD & CC-XD BUCKETS

| SIZE (Nominal) Millimeter | SIZE (Nominal) Inches | Vent Pattern 1 * | | Vent Pattern 2 * | | Vent Pattern 3 * | | Vent Pattern 4 * | | | Vent Pattern 5 * | | |
|---------------------------------|-----------------------------|----------------------------|-------------------------------|----------------------------|-------------------------------|----------------------------|-------------------------------|----------------------------|-------------------------------|--------------------------------|----------------------------|-------------------------------|--------------------------------|
| | | Hole Diameter Inches | Number of Holes in Body | Hole Diameter Inches | Number of Holes in Body | Hole Diameter Inches | Number of Holes in Body | Hole Diameter Inches | Number of Holes in Body | Number of Holes Each End | Hole Diameter Inches | Number of Holes in Body | Number of Holes Each End |
| 80-60 | 3 X 2 | 9/32 | 2 | 9/32 | 3 | 9/32 | 6 | 9/32 | 6 | 1 | 9/32 | 3 | 1 |
| 120-80 | 4 X 3 | 9/32 | 2 | 9/32 | 3 | 9/32 | 6 | 9/32 | 6 | 1 | 9/32 | 3 | 1 |
| 140-120 | 5 X 4 | 9/32 | 2 | 9/32 | 4 | 9/32 | 8 | 9/32 | 8 | 3 | 9/32 | 4 | 3 |
| 160-120 | 6 X 4 | 9/32 | 2 | 9/32 | 4 | 9/32 | 8 | 9/32 | 8 | 3 | 9/32 | 4 | 3 |
| 180-120 | 7 X 4 | 9/32 | 3 | 9/32 | 6 | 9/32 | 12 | 9/32 | 12 | 3 | 9/32 | 6 | 3 |
| 160-140 | 6 X 5 | 9/32 | 2 | 9/32 | 4 | 9/32 | 8 | 9/32 | 8 | 3 | 9/32 | 4 | 3 |
| 180-140 | 7 X 5 | 9/32 | 3 | 9/32 | 6 | 9/32 | 12 | 9/32 | 12 | 3 | 9/32 | 6 | 3 |
| 200-140 | 8 X 5 | 9/32 | 3 | 9/32 | 6 | 9/32 | 12 | 9/32 | 12 | 3 | 9/32 | 6 | 3 |
| 230-140 | 9 X 5 | 9/32 | 3 | 9/32 | 6 | 9/32 | 12 | 9/32 | 12 | 3 | 9/32 | 6 | 3 |
| 260-140 | 10 X 5 | 9/32 | 3 | 9/32 | 8 | 9/32 | 16 | 9/32 | 16 | 3 | 9/32 | 8 | 3 |
| 280-140 | 11 X 5 | 9/32 | 4 | 9/32 | 8 | 9/32 | 16 | 9/32 | 16 | 3 | 9/32 | 8 | 3 |
| 300-140 | 12 X 5 | 9/32 | 4 | 9/32 | 10 | 9/32 | 20 | 9/32 | 20 | 3 | 9/32 | 10 | 3 |
| 200-160 | 8 X 6 | 9/32 | 3 | 9/32 | 6 | 9/32 | 12 | 9/32 | 12 | 3 | 9/32 | 6 | 3 |
| 230-160 | 9 X 6 | 9/32 | 3 | 9/32 | 6 | 9/32 | 12 | 9/32 | 12 | 3 | 9/32 | 6 | 3 |
| 260-160 | 10 X 6 | 9/32 | 3 | 9/32 | 8 | 9/32 | 16 | 9/32 | 16 | 3 | 9/32 | 8 | 3 |
| 280-160 | 11 X 6 | 9/32 | 4 | 9/32 | 8 | 9/32 | 16 | 9/32 | 16 | 3 | 9/32 | 8 | 3 |
| 300-160 | 12 X 6 | 9/32 | 4 | 9/32 | 10 | 9/32 | 20 | 9/32 | 20 | 3 | 9/32 | 10 | 3 |
| 330-160 | 13 X 6 | 9/32 | 4 | 9/32 | 10 | 9/32 | 20 | 9/32 | 20 | 3 | 9/32 | 10 | 3 |
| 350-160 | 14 X 6 | 9/32 | 5 | 9/32 | 12 | 9/32 | 24 | 9/32 | 24 | 3 | 9/32 | 12 | 3 |
| 260-180 | 10 X 7 | 11/32 | 3 | 11/32 | 8 | 11/32 | 16 | 11/32 | 16 | 3 | 11/32 | 8 | 3 |
| 280-180 | 11 X 7 | 11/32 | 4 | 11/32 | 8 | 11/32 | 16 | 11/32 | 16 | 3 | 11/32 | 8 | 3 |
| 300-180 | 12 X 7 | 11/32 | 4 | 11/32 | 10 | 11/32 | 20 | 11/32 | 20 | 3 | 11/32 | 10 | 3 |
| 330-180 | 13 X 7 | 11/32 | 4 | 11/32 | 10 | 11/32 | 20 | 11/32 | 20 | 3 | 11/32 | 10 | 3 |
| 350-180 | 14 X 7 | 11/32 | 5 | 11/32 | 12 | 11/32 | 24 | 11/32 | 24 | 3 | 11/32 | 12 | 3 |
| 370-180 | 15 X 7 | 11/32 | 5 | 11/32 | 12 | 11/32 | 24 | 11/32 | 24 | 3 | 11/32 | 12 | 3 |
| 400-180 | 16 X 7 | 11/32 | 6 | 11/32 | 12 | 11/32 | 24 | 11/32 | 24 | 3 | 11/32 | 12 | 3 |
| 450-180 | 18 X 7 | 11/32 | 6 | 11/32 | 14 | 11/32 | 28 | 11/32 | 28 | 3 | 11/32 | 14 | 3 |
| 500-180 | 20 X 7 | 11/32 | 6 | 11/32 | 16 | 11/32 | 32 | 11/32 | 32 | 3 | 11/32 | 16 | 3 |

STYLE CC-HD & CC-XD "SUPER CAPACITY" BUCKETS

| | | | | | | | | | | | | | |
|---------|---------|-------|---|-------|----|-------|----|-------|----|---|-------|----|---|
| 260-215 | 10 X 8 | 11/32 | 3 | 11/32 | 8 | 11/32 | 16 | 11/32 | 16 | 3 | 11/32 | 8 | 3 |
| 280-215 | 11 X 8 | 11/32 | 4 | 11/32 | 8 | 11/32 | 16 | 11/32 | 16 | 3 | 11/32 | 8 | 3 |
| 300-215 | 12 X 8 | 11/32 | 4 | 11/32 | 10 | 11/32 | 20 | 11/32 | 20 | 3 | 11/32 | 10 | 3 |
| 330-215 | 13 X 8 | 11/32 | 4 | 11/32 | 10 | 11/32 | 20 | 11/32 | 20 | 3 | 11/32 | 10 | 3 |
| 350-215 | 14 X 8 | 11/32 | 5 | 11/32 | 12 | 11/32 | 24 | 11/32 | 24 | 3 | 11/32 | 12 | 3 |
| 370-215 | 15 X 8 | 11/32 | 5 | 11/32 | 12 | 11/32 | 24 | 11/32 | 24 | 3 | 11/32 | 12 | 3 |
| 400-215 | 16 X 8 | 11/32 | 6 | 11/32 | 12 | 11/32 | 24 | 11/32 | 24 | 3 | 11/32 | 12 | 3 |
| 450-215 | 18 X 8 | 11/32 | 6 | 11/32 | 14 | 11/32 | 28 | 11/32 | 28 | 3 | 11/32 | 14 | 3 |
| 500-215 | 20 X 8 | 11/32 | 6 | 11/32 | 16 | 11/32 | 32 | 11/32 | 32 | 3 | 11/32 | 16 | 3 |
| 400-250 | 16 X 9 | 11/32 | 6 | 11/32 | 12 | 11/32 | 24 | 11/32 | 24 | 3 | 11/32 | 12 | 3 |
| 500-250 | 20 X 9 | 11/32 | 6 | 11/32 | 16 | 11/32 | 32 | 11/32 | 32 | 3 | 11/32 | 16 | 3 |
| 500-260 | 20 X 10 | 13/32 | 6 | 13/32 | 16 | 13/32 | 32 | 13/32 | 32 | 3 | 13/32 | 16 | 3 |

STYLE U-HD BUCKETS fit Universal Industries Elevators

| | | | | | | | | | | | | | |
|---------|------------|------|---|-------|----|-------|----|-------|----|---|-------|----|---|
| 120-80 | 4 X 3 | 9/32 | 2 | 9/32 | 3 | 9/32 | 6 | 9/32 | 6 | 1 | 9/32 | 3 | 1 |
| 160-120 | 6 X 4 | 9/32 | 2 | 9/32 | 4 | 9/32 | 8 | 9/32 | 8 | 3 | 9/32 | 4 | 3 |
| 180-120 | 7 X 4-1/2 | 9/32 | 3 | 9/32 | 6 | 9/32 | 12 | 9/32 | 12 | 3 | 9/32 | 6 | 3 |
| 230-150 | 9 X 5-1/2 | 9/32 | 4 | 9/32 | 6 | 9/32 | 12 | 9/32 | 12 | 3 | 9/32 | 6 | 3 |
| 280-150 | 11 X 5-1/2 | 9/32 | 5 | 9/32 | 8 | 9/32 | 16 | 9/32 | 16 | 3 | 9/32 | 8 | 3 |
| 450-150 | 18 X 5-1/2 | 9/32 | 7 | 9/32 | 14 | 9/32 | 28 | 9/32 | 28 | 3 | 9/32 | 14 | 3 |
| 500-150 | 20 X 5-1/2 | 9/32 | 7 | 9/32 | 16 | 9/32 | 32 | 9/32 | 32 | 3 | 9/32 | 16 | 3 |
| 280-180 | 11 X 7 | 9/32 | 4 | 11/32 | 8 | 11/32 | 16 | 11/32 | 16 | 3 | 11/32 | 8 | 3 |

* Patterns 1, 2, 3, 4, & 5 are drilled with the same diameter holes as the mounting holes on the back. Vent hole diameters will vary with drilling specifications.

Contact KC Supply for venting recommendations or special patterns. 1 Universal refers to this bucket as 3-3/4 X 3 in fabricated steel, the buckets are completely interchangeable.