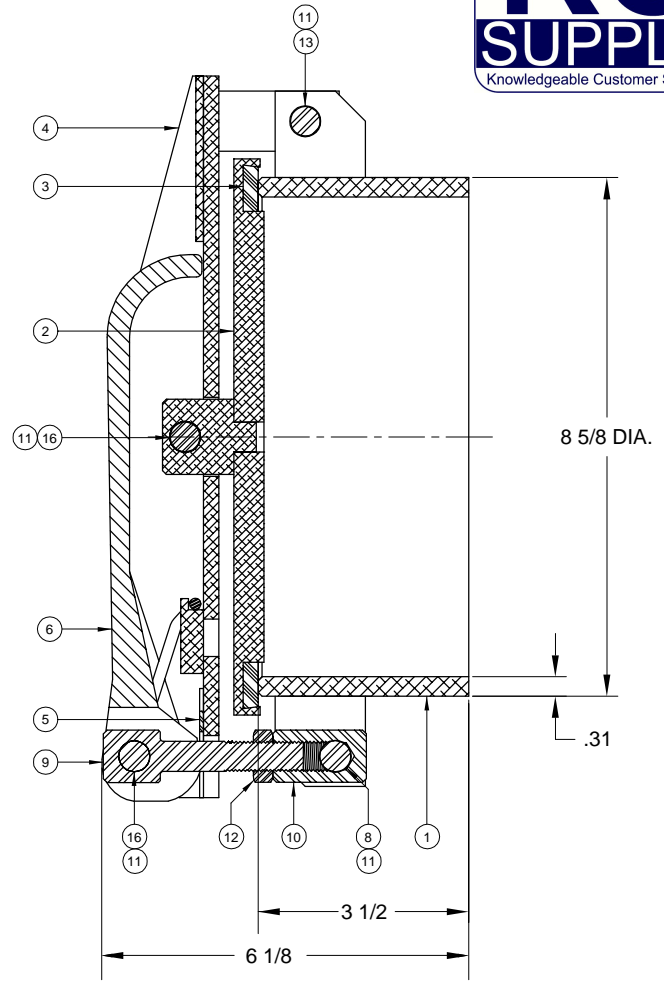
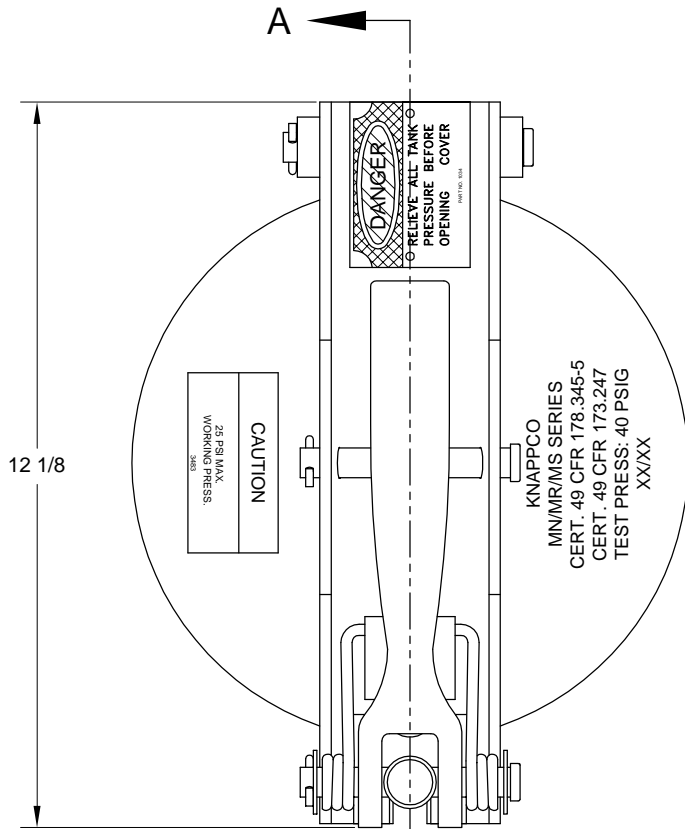
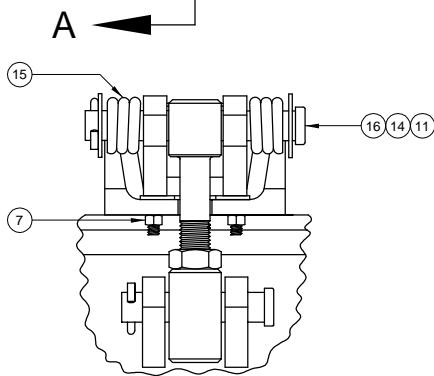


MN1110 8" FILL COVER ASSEMBLY



SECTION A-A



VIEW B-B

| ITEM | PART NUMBER | DESCRIPTION | QTY. |
|------|-------------|--------------------------|------|
| 1 | 4675 | WELD RING ASSY. (ALUM.) | 1 |
| 2 | 4676 | COVER ASSY. (ALUM.) | 1 |
| 3 | 4682 | GASKET (BUNA) | 1 |
| 4 | 4677 | STRONGBACK ASSY. (ALUM.) | 1 |
| 5 | 2458 | WEAR PLATE (S.S.) | 1 |
| 6 | 4871 | CAM LAVER (PLATED) | 1 |
| 7 | 4486 | HEX LOCK NUT (S.S.) | 2 |
| 8 | 5677 | CLEVIS PIN (PLATED) | 1 |
| 9 | 3439 | STUD (PLATED) | 1 |
| 10 | 1012 | CONNECTOR (PLATED) | 1 |

| ITEM | PART NUMBER | DESCRIPTION | QTY. |
|------|-------------|-----------------------|------|
| 11 | 1045 | COTTER PIN (PLATED) | 4 |
| 12 | 1016 | HEX JAM NUT (PLATED) | 1 |
| 13 | 4679 | CLEVIS PIN (PLATED) | 1 |
| 14 | 1043 | WASHER (PLATED) | 2 |
| 15 | 1048 | SAFETY CATCH (PLATED) | 1 |
| 16 | 4680 | CLEVIS PIN (PLATED) | 2 |

ALTERNATE SEALING MEDIA

| PART NUMBER | DESCRIPTION |
|-------------|----------------|
| 4928 | GASKET (VITON) |

