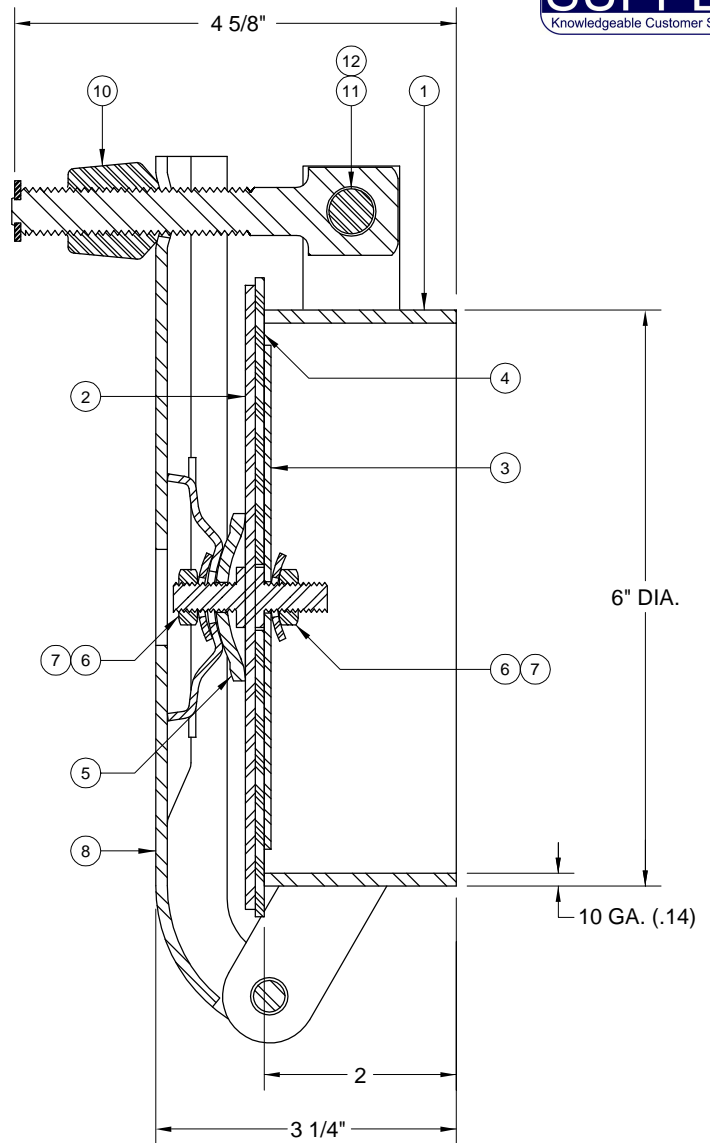
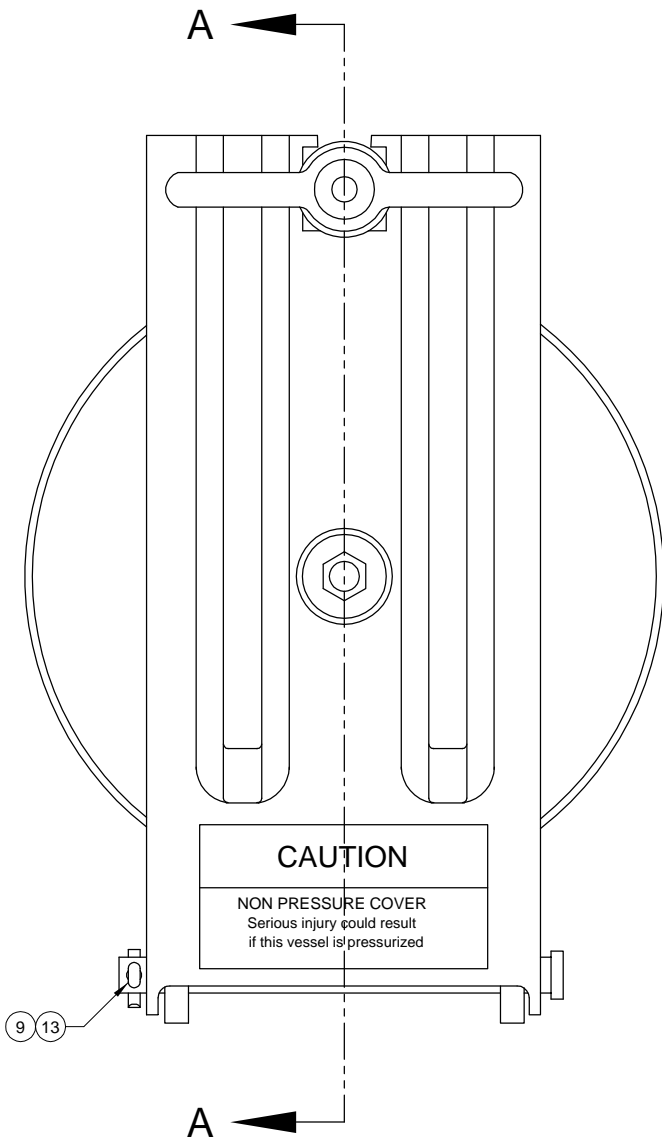


LH1110 6" FILL COVER ASSEMBLY



SECTION A-A

ITEM	PART NUMBER	DESCRIPTION	QTY.
1	2484	WELD RING ASSY (STEEL)	1
2	2485	FILL COVER ASSY (STEEL)	1
3	3766	GASKET RETAINER (STEEL)	1
4	2526	GASKET (BUNA)	1
5	1101	COVER WASHER (PLATED)	1
6	1117	FORMED WASHER (PLATED)	2
7	1104	HEX NUT	2
8	2583	STRONGBACK ASSY (STEEL)	1
9	5045	CLEVIS PIN (PLATED)	1
10	2627	STUD ASSY (PLATED)	1

ITEM	PART NUMBER	DESCRIPTION	QTY.
11	3952	CLEVIS PIN (PLATED)	1
12	1020	PAL NUT (PLATED)	1
13	1045	COTTER PIN (PLATED)	1

ALTERNATE SEALING MEDIA

PART NUMBER	DESCRIPTION
5131	GASKET (WHITE NEOPRENE)
2808	GASKET (HIGH TEMP.)
4255	GASKET (EPDM)
4759	GASKET (TEFLON ENVELOPE)

